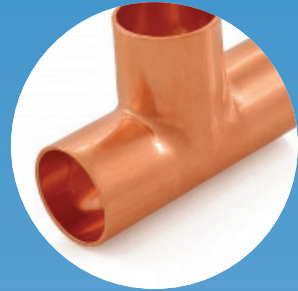


Catalog



Contents

PEX Tubing

| | |
|-------------------------------|---|
| Barrier PEX Tubing (red) | 2 |
| Non-barrier PEX Tubing (red) | |
| Non-barrier PEX Tubing (blue) | |
| PEX-AL-PEX Tubing | |

Brass PEX Fittings

| | |
|-------------------------|---|
| Plugs | 3 |
| Couplings | |
| Elbows | |
| Male Sweat Elbows | |
| Female Sweat Elbows | |
| Male Thread Elbows | |
| Drop Ear Elbows | |
| Tees | 4 |
| Male Sweat Adapters | |
| Female Sweat Adapters | |
| Male Thread Adapters | |
| Female Thread Adapters | 5 |
| Swivel Fixture Adapters | |
| Swivel Fixture Elbows | |
| Splicing Kits | |

Copper Fittings

| | |
|-------------------------------|---|
| Caps | 6 |
| Couplings | |
| Slip Couplings | |
| Reducing Couplings | |
| Elbows 90° | |
| Street Elbows 90° | 7 |
| Elbows 45° | |
| Street Elbows 45° | |
| Tees | |
| Male Thread Adapters | 8 |
| Female Thread Adapters | |
| Male Thread Street Adapters | |
| Female Thread Street Adapters | |

Poly Alloy PEX Fittings

| | |
|-------------------------------|---|
| Plugs | 9 |
| Couplings | |
| Elbows | |
| Male Thread Elbows | |
| Tees | |
| Male Thread Adapters | |
| Female Thread Swivel Adapters | |
| Closed Manifolds | |
| Open Manifolds | |

Push To Connect Fittings

| | |
|----------------|----|
| Plugs | 10 |
| Couplings | |
| Slip Couplings | |

| | |
|----------------------|----|
| Elbows | |
| MNPT Elbows | |
| FNPT Elbows | |
| FNPT Swivel Elbows | |
| FNPT Drop Ear Elbows | |
| Male Sweat Elbows | |
| Female Sweat Elbows | |
| Male Thread Elbows | |
| Drop Ear Elbows | |
| Tees | 11 |
| Slip Tees | |
| FNPT Tees | |
| MNPT Adapters | |
| FNPT Adapters | |
| FNPT Swivel Adapters | |
| Ball Valves | |
| Disconnect Clips | |
| PEX Stiffeners | |

PEX-AL-PEX Compression Fittings

| | |
|----------------------|----|
| Plugs | 12 |
| Couplings | |
| Elbows | |
| Male Thread Adapters | |

Dielectric Unions

Brass Ball Valves

| | |
|-----------------------|----|
| NPT Thread | 13 |
| NPT Thread With Waste | |
| Sweat | |
| Sweat With Waste | |
| PEX | |
| PEX With Waste Outlet | |
| PEX With Drop Ears | 14 |
| PEX × NPT | |
| PEX × Sweat | |
| PEX × Sweave! FNPT | |
| Press | |

Stop Valves

| | |
|--------------------------------|----|
| PEX × PEX Straight | 15 |
| PEX × OD Compr. Straight | |
| OD Compr. × OD Compr. Straight | |
| Sweat × OD Compr. Straight | |
| PEX × OD Compr. Angle | |
| OD Compr. × OD Compr. Angle | |
| Sweat × OD Compr. Angle | |

Drain Valves

Gas Ball Valves

Hose Bibbs

Pump Isolation Valves

| | |
|--------------------|--|
| Threaded Isolators | |
| SWT Isolators | |

Brass Pipe Nipples

Black Pipe Nipples

Radiant Heat Manifolds

| | |
|------------------------------------|----|
| Stainless Steel Manifolds | 19 |
| Brass Manifolds | |
| PEX Compression Adapters | |
| Ball Valves | |
| Angle Ball Valves | |
| Replacement Flow Meters | |
| Thermostatic Actuators | |
| End Plugs | 20 |
| Couplings | |
| Balancing Valves | |
| Air Vents | |
| Outlet Cups | |
| Manifold x Male NPT Adapters | |
| Manifold x Female NPT Adapters | |
| End Piece Sets With Drain | |
| End Piece Sets With Drain And Vent | |
| Replacement Well Thermometers | |

Boiler Headers

Brazed Plate Heat Exchangers

Installation Accessories

| | |
|------------------------|----|
| Tube Talons | 22 |
| Pipe Clamps | |
| Suspension Pipe Clamps | |
| Snap-in Clips | |
| PEX Bend Supports | |
| Slab Stub-Out Elbows | |
| Wire Mesh Clips | |
| PEX Rails | |

PEX Tools

| | |
|--------------------------|----|
| Crimp Tools | 23 |
| Crimp Tools (Angle Head) | |
| Decrimping Tools | |
| Crimp Tool Kits | |
| Clamp Tools | |
| Cutter Tools | |
| Foamboard Staplers | |
| Foamboard Staples | |

Other Stuff

| | |
|------------------------------|----|
| Manifold Pressure Test Kits | 24 |
| Reamers | |
| Radiant Heat Transfer Plates | |

Technical Specifications Sheet

| | |
|------------------------|----|
| Barrier PEX Tubing | 25 |
| Non-Barrier PEX Tubing | 26 |

PEX Tubing



Barrier PEX Tubing (red)



- ✓ ASTM F876/F877
- ✓ CSA B137.5
- ✓ DIN4726
- ✓ NSF/ANSI 14 (nsf-rfh)
- ✓ SDR-9
- ✓ UPC/IAPMO

PEX Tubing with oxygen barrier is used in heating applications such as radiant heated floors, snow melt systems, baseboard and radiator heating systems and boiler / wood furnace supply and return lines.

External oxygen barrier coating protects ferrous components from corrosion and assures a longer life and better performance of the system.

Everhot Oxygen Barrier PEX is a PEX-B type tubing.

| Part# | Product Description | Packing |
|---------|--|----------|
| BPR3830 | 3/8" × 300 ft Oxygen Barrier PEX Tubing | 1/box |
| BPR3850 | 3/8" × 500 ft Oxygen Barrier PEX Tubing | 1/box |
| BPR3860 | 3/8" × 600 ft Oxygen Barrier PEX Tubing | 1/box |
| BPR3810 | 3/8" × 1000 ft Oxygen Barrier PEX Tubing | 1/box |
| BPR1230 | 1/2" × 300 ft Oxygen Barrier PEX Tubing | 1/box |
| BPR1250 | 1/2" × 500 ft Oxygen Barrier PEX Tubing | 1/box |
| BPR1260 | 1/2" × 600 ft Oxygen Barrier PEX Tubing | 1/box |
| BPR1290 | 1/2" × 900 ft Oxygen Barrier PEX Tubing | 1/box |
| BPR1210 | 1/2" × 1000 ft Oxygen Barrier PEX Tubing | 1/box |
| BPR5840 | 5/8" × 400 ft Oxygen Barrier PEX Tubing | 1/box |
| BPR5850 | 5/8" × 500 ft Oxygen Barrier PEX Tubing | 1/box |
| BPR5810 | 5/8" × 1000 ft Oxygen Barrier PEX Tubing | 1/box |
| BPR3430 | 3/4" × 300 ft Oxygen Barrier PEX Tubing | 1/box |
| BPR3450 | 3/4" × 500 ft Oxygen Barrier PEX Tubing | 1/box |
| BPR1001 | 1" × 100 ft Oxygen Barrier PEX Tubing | 3/bundle |
| BPR1030 | 1" × 300 ft Oxygen Barrier PEX Tubing | 1/box |
| BPR1050 | 1" × 500 ft Oxygen Barrier PEX Tubing | 1/box |

Non-barrier PEX Tubing (red)



- ✓ ASTM F876/F877/F2023
- ✓ CSA B137.5
- ✓ NSF/ANSI 61 G (nsf-pw-g)
- ✓ NSF/ANSI 372
- ✓ UPC/IAPMO

Non-Barrier PEX Tubing is commonly used for domestic hot and cold water plumbing applications. A variety of colors allows installer to designate different color PEX pipes for selected water temperatures and types.

Everhot Non-Barrier PEX is a PEX-B type tubing.

| | | |
|---------|---------------------------------------|----------|
| NPR1201 | 1/2" × 100 ft non-barrier PEX tubing | 5/bundle |
| NPR1230 | 1/2" × 300 ft non-barrier PEX tubing | 1/box |
| NPR1250 | 1/2" × 500 ft non-barrier PEX tubing | 1/box |
| NPR1210 | 1/2" × 1000 ft non-barrier PEX tubing | 1/box |
| NPR3401 | 3/4" × 100 ft non-barrier PEX tubing | 5/bundle |
| NPR3430 | 3/4" × 300 ft non-barrier PEX tubing | 1/box |
| NPR3450 | 3/4" × 500 ft non-barrier PEX tubing | 1/box |
| NPR1001 | 1" × 100 ft non-barrier PEX tubing | 3/bundle |
| NPR1030 | 1" × 300 ft non-barrier PEX tubing | 1/box |

Non-barrier PEX Tubing (blue)



- ✓ ASTM F876/F877/F2023
- ✓ CSA B137.5
- ✓ NSF/ANSI 61 G (nsf-pw-g)
- ✓ NSF/ANSI 372
- ✓ UPC/IAPMO

| | | |
|---------|---------------------------------------|----------|
| NPB1201 | 1/2" × 100 ft non-barrier PEX tubing | 5/bundle |
| NPB1230 | 1/2" × 300 ft non-barrier PEX tubing | 1/box |
| NPB1250 | 1/2" × 500 ft non-barrier PEX tubing | 1/box |
| NPB1210 | 1/2" × 1000 ft non-barrier PEX tubing | 1/box |
| NPB3401 | 3/4" × 100 ft non-barrier PEX tubing | 5/bundle |
| NPB3430 | 3/4" × 300 ft non-barrier PEX tubing | 1/box |
| NPB3450 | 3/4" × 500 ft non-barrier PEX tubing | 1/box |
| NPB1001 | 1" × 100 ft non-barrier PEX tubing | 3/bundle |
| NPB1030 | 1" × 300 ft non-barrier PEX tubing | 1/box |

PEX-AL-PEX Tubing



- ✓ ASTM F1281
- ✓ CSA B137.10
- ✓ UPC/IAPMO

| | | |
|---------|----------------------------------|-------|
| APX1230 | 1/2" × 300 ft PEX-AL-PEX Tubing | 1/box |
| APX1250 | 1/2" × 500 ft PEX-AL-PEX Tubing | 1/box |
| APX1210 | 1/2" × 1000 ft PEX-AL-PEX Tubing | 1/box |
| APX3430 | 3/4" × 300 ft PEX-AL-PEX Tubing | 1/box |
| APX1030 | 1" × 300 ft PEX-AL-PEX Tubing | 1/box |

Brass PEX Fittings

Crimp style PEX fittings are the most popular type of fittings used for the installation of PEX tubing. They are manufactured from brass or PPSU (Polyphenylsulfone Polymer) and can be installed using Crimp, Clamp (Cinch) or Press connection methods.

✓ ASTM F1807
✓ ASTM F2159



Plugs



| Part # | Lead-Free Part # | Product Description | Bag Qty |
|---------|------------------|---------------------|---------|
| BPF7102 | PLF7102 | 1/2" PEX Plug | 25 |
| BPF7104 | PLF7104 | 3/4" PEX Plug | 25 |
| BPF7105 | PLF7105 | 1" PEX Plug | 10 |

Couplings



| | | | |
|---------|---------|-----------------------------------|----|
| BPF7001 | PLF7001 | 3/8" × 3/8" PEX Coupling | 25 |
| BPF7002 | PLF7002 | 3/8" × 1/2" PEX Reducing Coupling | 25 |
| BPF7003 | PLF7003 | 1/2" × 1/2" PEX Coupling | 25 |
| BPF7004 | PLF7004 | 1/2" × 5/8" PEX Reducing Coupling | 25 |
| BPF7005 | PLF7005 | 1/2" × 3/4" PEX Reducing Coupling | 25 |
| BPF7006 | PLF7006 | 5/8" × 5/8" PEX Coupling | 25 |
| BPF7007 | PLF7007 | 5/8" × 3/4" PEX Reducing Coupling | 25 |
| BPF7008 | PLF7008 | 3/4" × 3/4" PEX Coupling | 25 |
| BPF7010 | PLF7010 | 3/4" × 1" PEX Reducing Coupling | 10 |
| BPF7009 | PLF7009 | 1" × 1" PEX Coupling | 10 |

Elbows



| | | | |
|---------|---------|--------------------------------|----|
| BPF6801 | PLF6801 | 3/8" × 3/8" PEX Elbow | 25 |
| BPF6807 | PLF6807 | 1/2" × 3/8" PEX Reducing Elbow | 25 |
| BPF6802 | PLF6802 | 1/2" × 1/2" PEX Elbow | 25 |
| BPF6803 | PLF6803 | 1/2" × 3/4" PEX Reducing Elbow | 25 |
| BPF6804 | | 5/8" × 5/8" PEX Elbow | 25 |
| BPF6805 | PLF6805 | 3/4" × 3/4" PEX Elbow | 25 |
| BPF6806 | PLF6806 | 1" × 1" PEX Elbow | 10 |

Male Sweat Elbows



| | | | |
|---------|---------|--------------------------------------|----|
| BPF7601 | PLF7601 | 1/2" PEX × 1/2" Copper Fitting Elbow | 25 |
| BPF7602 | PLF7602 | 1/2" PEX × 3/4" Copper Fitting Elbow | 25 |
| BPF7604 | | 5/8" PEX × 3/4" Copper Fitting Elbow | 25 |
| BPF7603 | PLF7603 | 3/4" PEX × 3/4" Copper Fitting Elbow | 25 |

Female Sweat Elbows



| | | | |
|---------|---------|-----------------------------------|----|
| BPF7701 | PLF7701 | 1/2" PEX × 1/2" Copper Pipe Elbow | 25 |
| BPF7702 | PLF7702 | 1/2" PEX × 3/4" Copper Pipe Elbow | 25 |
| BPF7704 | | 5/8" PEX × 3/4" Copper Pipe Elbow | 25 |
| BPF7703 | PLF7703 | 3/4" PEX × 3/4" Copper Pipe Elbow | 25 |

Male Thread Elbows



| | | | |
|---------|---------|-------------------------------------|----|
| BPF7801 | PLF7801 | 1/2" PEX × 1/2" Male Threaded Elbow | 25 |
| BPF7802 | | 1/2" PEX × 3/4" Male Threaded Elbow | 25 |
| BPF7803 | PLF7803 | 3/4" PEX × 3/4" Male Threaded Elbow | 25 |
| BPF7804 | PLF7804 | 3/4" PEX × 1" Male Threaded Elbow | 25 |

Drop Ear Elbows



| | | | |
|---------|---------|--|----|
| BPF8001 | PLF8001 | 1/2" PEX × 1/2" Female Threaded Drop Ear Elbow | 25 |
| BPF8002 | PLF8002 | 1/2" PEX × 3/4" Female Threaded Drop Ear Elbow | 25 |
| BPF8004 | PLF8004 | 3/4" PEX × 1/2" Female Threaded Drop Ear Elbow | 25 |
| BPF8003 | PLF8003 | 3/4" PEX × 3/4" Female Threaded Drop Ear Elbow | 25 |

Brass PEX Fittings

Crimp style PEX fittings are the most popular type of fittings used for the installation of PEX tubing. They are manufactured from brass or PPSU (Polyphenylsulfone Polymer) and can be installed using Crimp, Clamp (Cinch) or Press connection methods.

✓ ASTM F1807
✓ ASTM F2159



Tees



| Part # | Lead-Free Part # | Product Description | Bag Qty |
|---------|------------------|-------------------------------------|---------|
| BPF6912 | PLF6912 | 3/8" × 3/8" × 3/8" PEX" Tee | 25 |
| BPF6914 | | 1/2" × 3/8" × 1/2" PEX Reducing Tee | 25 |
| BPF6913 | | 1/2" × 1/2" × 3/8" PEX Reducing Tee | 25 |
| BPF6901 | PLF6901 | 1/2" × 1/2" × 1/2" PEX Tee | 25 |
| BPF6902 | PLF6902 | 1/2" × 1/2" × 3/4" PEX Reducing Tee | 25 |
| BPF6903 | PLF6903 | 3/4" × 1/2" × 1/2" PEX Reducing Tee | 25 |
| BPF6904 | PLF6904 | 3/4" × 1/2" × 3/4" PEX Reducing Tee | 25 |
| BPF6905 | PLF6905 | 3/4" × 3/4" × 1/2" PEX Reducing Tee | 25 |
| BPF6906 | PLF6906 | 3/4" × 3/4" × 3/4" PEX Tee | 25 |
| BPF6910 | PLF6910 | 3/4" × 3/4" × 1" PEX Reducing Tee | 10 |
| BPF6907 | PLF6907 | 1" × 3/4" × 3/4" PEX Reducing Tee | 10 |
| BPF6911 | PLF6911 | 1" × 1" × 1/2" PEX Reducing Tee | 10 |
| BPF6908 | PLF6908 | 1" × 1" × 3/4" PEX Reducing Tee | 10 |
| BPF6909 | PLF6909 | 1" × 1" × 1" PEX Tee | 10 |

Male Sweat Adapters



| | | | |
|---------|---------|--|----|
| BPF7207 | PLF7207 | 3/8" PEX × 1/2" Copper Fitting Adapter | 25 |
| BPF7201 | PLF7201 | 1/2" PEX × 1/2" Copper Fitting Adapter | 25 |
| BPF7202 | PLF7202 | 1/2" PEX × 3/4" Copper Fitting Adapter | 25 |
| BPF7203 | | 5/8" PEX × 3/4" Copper Fitting Adapter | 25 |
| BPF7208 | PLF7208 | 3/4" PEX × 1/2" Copper Fitting Adapter | 25 |
| BPF7204 | PLF7204 | 3/4" PEX × 3/4" Copper Fitting Adapter | 25 |
| BPF7209 | PLF7209 | 3/4" PEX × 1" Copper Fitting Adapter | 10 |
| BPF7205 | PLF7205 | 1" PEX × 3/4" Copper Fitting Adapter | 10 |
| BPF7206 | PLF7206 | 1" PEX × 1" Copper Fitting Adapter | 10 |

Female Sweat Adapters



| | | | |
|---------|---------|-------------------------------------|----|
| BPF7306 | | 3/8" PEX × 1/2" Copper Pipe Adapter | 25 |
| BPF7301 | PLF7301 | 1/2" PEX × 1/2" Copper Pipe Adapter | 25 |
| BPF7302 | PLF7302 | 1/2" PEX × 3/4" Copper Pipe Adapter | 25 |
| BPF7308 | | 5/8" PEX × 1/2" Copper Pipe Adapter | 25 |
| BPF7303 | | 5/8" PEX × 3/4" Copper Pipe Adapter | 25 |
| BPF7304 | PLF7304 | 3/4" PEX × 3/4" Copper Pipe Adapter | 25 |
| BPF7307 | PLF7307 | 3/4" PEX × 1" Copper Pipe Adapter | 10 |
| BPF7305 | PLF7305 | 1" PEX × 1" Copper Pipe Adapter | 10 |

Male Thread Adapters



| | | | |
|---------|---------|---------------------------------------|----|
| BPF7401 | PLF7401 | 3/8" PEX × 1/2" Male Threaded Adapter | 25 |
| BPF7402 | PLF7402 | 1/2" PEX × 1/2" Male Threaded Adapter | 25 |
| BPF7403 | PLF7403 | 1/2" PEX × 3/4" Male Threaded Adapter | 25 |
| BPF7404 | | 5/8" PEX × 1/2" Male Threaded Adapter | 25 |
| BPF7405 | | 5/8" PEX × 3/4" Male Threaded Adapter | 25 |
| BPF7408 | PLF7408 | 3/4" PEX × 1/2" Male Threaded Adapter | 25 |
| BPF7406 | PLF7406 | 3/4" PEX × 3/4" Male Threaded Adapter | 25 |
| BPF7410 | PLF7410 | 3/4" PEX × 1" Male Threaded Adapter | 10 |
| BPF7409 | PLF7409 | 1" PEX × 3/4" Male Threaded Adapter | 10 |
| BPF7407 | PLF7407 | 1" PEX × 1" Male Threaded Adapter | 10 |

Brass PEX Fittings

Crimp style PEX fittings are the most popular type of fittings used for the installation of PEX tubing. They are manufactured from brass or PPSU (Polyphenylsulfone Polymer) and can be installed using Crimp, Clamp (Cinch) or Press connection methods.

✓ ASTM F1807
✓ ASTM F2159



Female Thread Adapters



| Part # | Lead-Free Part # | Product Description | Bag Qty |
|---------|------------------|---|---------|
| BPF7501 | | 3/8" PEX × 1/2" Female Threaded Adapter | 25 |
| BPF7502 | PLF7502 | 1/2" PEX × 1/2" Female Threaded Adapter | 25 |
| BPF7503 | PLF7503 | 1/2" PEX × 3/4" Female Threaded Adapter | 25 |
| BPF7504 | | 5/8" PEX × 1/2" Female Threaded Adapter | 25 |
| BPF7505 | | 5/8" PEX × 3/4" Female Threaded Adapter | 25 |
| BPF7508 | PLF7508 | 3/4" PEX × 1/2" Female Threaded Adapter | 25 |
| BPF7506 | PLF7506 | 3/4" PEX × 3/4" Female Threaded Adapter | 25 |
| BPF7507 | PLF7507 | 1" PEX × 1" Female Threaded Adapter | 10 |

Swivel Fixture Adapters



| | | | |
|---------|---------|--|----|
| BPF8101 | PLF8101 | 1/2" PEX × 1/2" Female Threaded Swivel Adapter | 10 |
| BPF8102 | PLF8102 | 1/2" PEX × 3/4" Female Threaded Swivel Adapter | 10 |
| BPF8103 | | 1/2" PEX × 7/8" Ballcock Swivel Adapter | 10 |

Swivel Fixture Elbows



| | | | |
|---------|---------|--|----|
| BPF8301 | PLF8301 | 1/2" PEX × 1/2" Female Threaded Swivel Elbow | 10 |
|---------|---------|--|----|

Splicing Kits



| | | | |
|---------|---------|---|----|
| BPF8201 | PLF8201 | 1/2" PEX × 1/2" PB (polybutylene) Splicing/Repair Kit | 25 |
| BPF8202 | PLF8202 | 3/4" PEX × 3/4" PB (polybutylene) Splicing/Repair Kit | 25 |

Copper Fittings

Copper pipe fittings have a variety of applications ranging from hot and cold water plumbing to hydronic heating and many others, in residential, commercial and industrial settings.

- ✓ Wrot Copper Fittings
- ✓ ASTM B75
- ✓ Alloy C12200
- ✓ NSF Certified
- ✓ UPC Listed



Caps



| Part # | Product Description | Bag Qty |
|--------|---------------------|---------|
| P-1 | 1/4" Copper Cap | 100 |
| P-2 | 3/8" Copper Cap | 50 |
| P-3 | 1/2" Copper Cap | 25 |
| P-4 | 3/4" Copper Cap | 25 |
| P-5 | 1" Copper Cap | 10 |
| P-6 | 1-1/4" Copper Cap | 10 |
| P-7 | 1-1/2" Copper Cap | 10 |
| P-8 | 2" Copper Cap | 10 |

Couplings



| | | |
|------|------------------------|-----|
| C-10 | 1/4" Copper Coupling | 100 |
| C-20 | 3/8" Copper Coupling | 100 |
| C-30 | 1/2" Copper Coupling | 25 |
| C-40 | 3/4" Copper Coupling | 25 |
| C-50 | 1" Copper Coupling | 10 |
| C-60 | 1-1/4" Copper Coupling | 10 |
| C-70 | 1-1/2" Copper Coupling | 10 |
| C-80 | 2" Copper Coupling | 5 |

Slip Couplings



| | | |
|-------|-----------------------------|----|
| CS-20 | 3/8" Copper Slip Coupling | 50 |
| CS-30 | 1/2" Copper Slip Coupling | 25 |
| CS-00 | 5/8" Copper Slip Coupling | 50 |
| CS-40 | 3/4" Copper Slip Coupling | 25 |
| CS-50 | 1" Copper Slip Coupling | 10 |
| CS-60 | 1-1/4" Copper Slip Coupling | 10 |
| CS-70 | 1-1/2" Copper Slip Coupling | 10 |
| CS-80 | 2" Copper Slip Coupling | 5 |

Reducing Couplings



| | | |
|------|--|-----|
| C-31 | 1/2" x 1/4" Reducing Copper Coupling | 100 |
| C-32 | 1/2" x 3/8" Reducing Copper Coupling | 100 |
| C-43 | 3/4" x 1/2" Reducing Copper Coupling | 25 |
| C-53 | 1" x 1/2" Reducing Copper Coupling | 10 |
| C-54 | 1" x 3/4" Reducing Copper Coupling | 10 |
| C-63 | 1-1/4" x 1/2" Reducing Copper Coupling | 10 |
| C-64 | 1-1/4" x 3/4" Reducing Copper Coupling | 10 |
| C-65 | 1-1/4" x 1" Reducing Copper Coupling | 25 |
| C-73 | 1-1/2" x 1/2" Reducing Copper Coupling | 10 |
| C-74 | 1-1/2" x 3/4" Reducing Copper Coupling | 10 |
| C-75 | 1-1/2" x 1" Reducing Copper Coupling | 10 |
| C-76 | 1-1/2" x 1-1/4" Reducing Copper Coupling | 10 |

Elbows 90°



| | | |
|--------|---|-----|
| E90-10 | 1/4" Copper 90° Elbow | 100 |
| E90-20 | 3/8" Copper 90° Elbow | 100 |
| E90-30 | 1/2" Copper 90° Elbow | 25 |
| E90-00 | 5/8" Copper 90° Elbow | 50 |
| E90-40 | 3/4" Copper 90° Elbow | 25 |
| E90-43 | 1/2" x 3/4" Copper 90° Reducing Elbow | 25 |
| E90-50 | 1" Copper 90° Elbow | 10 |
| E90-53 | 1/2" x 1" Copper 90° Reducing Elbow | 10 |
| E90-54 | 3/4" x 1" Copper 90° Reducing Elbow | 10 |
| E90-60 | 1-1/4" Copper 90° Elbow | 10 |
| E90-64 | 3/4" x 1-1/4" Copper 90° Reducing Elbow | 10 |
| E90-65 | 1" x 1-1/4" Copper 90° Reducing Elbow | 10 |
| E90-70 | 1-1/2" Copper 90° Elbow | 10 |
| E90-80 | 2" Copper 90° Elbow | 10 |

Copper Fittings

Copper pipe fittings have a variety of applications ranging from hot and cold water plumbing to hydronic heating and many others, in residential, commercial and industrial settings.

- ✓ Wrot Copper Fittings
- ✓ ASTM B75
- ✓ Alloy C12200
- ✓ NSF Certified
- ✓ UPC Listed



Street Elbows 90°



| Part # | Product Description | Bag Qty |
|-----------|--------------------------------------|---------|
| E90-ST-10 | 1/4" FTG × Copper 90° Street Elbow | 50 |
| E90-ST-20 | 3/8" FTG × Copper 90° Street Elbow | 50 |
| E90-ST-30 | 1/2" FTG × Copper 90° Street Elbow | 25 |
| E90-ST-00 | 5/8" FTG × Copper 90° Street Elbow | 50 |
| E90-ST-40 | 3/4" FTG × Copper 90° Street Elbow | 25 |
| E90-ST-50 | 1" FTG × Copper 90° Street Elbow | 10 |
| E90-ST-60 | 1-1/4" FTG × Copper 90° Street Elbow | 10 |
| E90-ST-70 | 1-1/2" FTG × Copper 90° Street Elbow | 10 |
| E90-ST-80 | 2" FTG × Copper 90° Street Elbow | 10 |

Elbows 45°



| | | |
|--------|-------------------------|----|
| E45-30 | 1/2" Copper 45° Elbow | 25 |
| E45-40 | 3/4" Copper 45° Elbow | 25 |
| E45-50 | 1" Copper 45° Elbow | 10 |
| E45-60 | 1-1/4" Copper 45° Elbow | 10 |
| E45-70 | 1-1/2" Copper 45° Elbow | 10 |
| E45-80 | 2" Copper 45° Elbow | 10 |

Street Elbows 45°

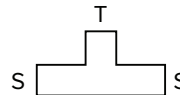


| | | |
|-----------|--------------------------------------|----|
| E45-ST-30 | 1/2" FTG × Copper 45° Street Elbow | 25 |
| E45-ST-40 | 3/4" FTG × Copper 45° Street Elbow | 25 |
| E45-ST-50 | 1" FTG × Copper 45° Street Elbow | 10 |
| E45-ST-60 | 1-1/4" FTG × Copper 45° Street Elbow | 10 |
| E45-ST-70 | 1-1/2" FTG × Copper 45° Street Elbow | 10 |
| E45-ST-80 | 2" FTG × Copper 45° Street Elbow | 10 |

Tees



The proper way to read copper tees is Side (S) × Side (S) × Top (T):



| Part # | Product Description | Bag Qty | Part # | Product Description | Bag Qty |
|--------|-------------------------------|---------|--------|-------------------------------------|---------|
| T-100 | 1/4" Copper Tee | 50 | T-643 | 1-1/4" × 3/4" × 1/2" Copper Tee | 10 |
| T-200 | 3/8" Copper Tee | 50 | T-644 | 1-1/4" × 3/4" × 3/4" Copper Tee | 10 |
| T-300 | 1/2" Copper Tee | 25 | T-646 | 1-1/4" × 3/4" × 1-1/4" Copper Tee | 10 |
| T-331 | 1/2" × 1/2" × 1/4" Copper Tee | 50 | T-653 | 1-1/4" × 1" × 1/2" Copper Tee | 10 |
| T-332 | 1/2" × 1/2" × 3/8" Copper Tee | 50 | T-654 | 1-1/4" × 1" × 3/4" Copper Tee | 10 |
| T-400 | 3/4" Copper Tee | 25 | T-655 | 1-1/4" × 1" × 1" Copper Tee | 10 |
| T-433 | 3/4" × 1/2" × 1/2" Copper Tee | 25 | T-656 | 1-1/4" × 1" × 1-1/4" Copper Tee | 10 |
| T-434 | 3/4" × 1/2" × 3/4" Copper Tee | 25 | T-663 | 1-1/4" × 1-1/4" × 1/2" Copper Tee | 10 |
| T-443 | 3/4" × 3/4" × 1/2" Copper Tee | 25 | T-664 | 1-1/4" × 1-1/4" × 3/4" Copper Tee | 10 |
| T-445 | 3/4" × 3/4" × 1" Copper Tee | 10 | T-665 | 1-1/4" × 1-1/4" × 1" Copper Tee | 10 |
| T-500 | 1" Copper Tee | 10 | T-700 | 1-1/2" Copper Tee | 5 |
| T-533 | 1" × 1/2" × 1/2" Copper Tee | 10 | T-773 | 1-1/2" × 1-1/2" × 1/2" Copper Tee | 5 |
| T-534 | 1" × 1/2" × 3/4" Copper Tee | 10 | T-774 | 1-1/2" × 1-1/2" × 3/4" Copper Tee | 5 |
| T-535 | 1" × 1/2" × 1" Copper Tee | 10 | T-775 | 1-1/2" × 1-1/2" × 1" Copper Tee | 5 |
| T-543 | 1" × 3/4" × 1/2" Copper Tee | 10 | T-776 | 1-1/2" × 1-1/2" × 1-1/4" Copper Tee | 5 |
| T-544 | 1" × 3/4" × 3/4" Copper Tee | 10 | T-800 | 2" Copper Tee | 5 |
| T-545 | 1" × 3/4" × 1" Copper Tee | 10 | T-883 | 2" × 2" × 1/2" Copper Tee | 5 |
| T-553 | 1" × 1" × 1/2" Copper Tee | 10 | T-884 | 2" × 2" × 3/4" Copper Tee | 5 |
| T-554 | 1" × 1" × 3/4" Copper Tee | 10 | T-885 | 2" × 2" × 1" Copper Tee | 5 |
| T-556 | 1" × 1" × 1-1/4" Copper Tee | 10 | T-886 | 2" × 2" × 1-1/4" Copper Tee | 5 |
| T-600 | 1-1/4" Copper Tee | 10 | T-887 | 2" × 2" × 1-1/2" Copper Tee | 5 |

Copper Fittings

Copper pipe fittings have a variety of applications ranging from hot and cold water plumbing to hydronic heating and many others, in residential, commercial and industrial settings.

- ✓ Wrot Copper Fittings
- ✓ ASTM B75
- ✓ Alloy C12200
- ✓ NSF Certified
- ✓ UPC Listed



Male Thread Adapters



| Part # | Product Description | Bag Qty |
|--------|--|---------|
| AM-20 | 3/8" Copper × Male Threaded Adapter | 50 |
| AM-30 | 1/2" Copper × Male Threaded Adapter | 25 |
| AM-32 | 1/2" Copper × 3/8" Male Threaded Adapter | 50 |
| AM-34 | 1/2" Copper × 3/4" Male Threaded Adapter | 25 |
| AM-35 | 1/2" Copper × 1" Male Threaded Adapter | 10 |
| AM-40 | 3/4" Copper × Male Threaded Adapter | 25 |
| AM-43 | 3/4" Copper × 1/2" Male Threaded Adapter | 25 |
| AM-45 | 3/4" Copper × 1" Male Threaded Adapter | 10 |
| AM-50 | 1" Copper × Male Threaded Adapter | 10 |
| AM-53 | 1" Copper × 1/2" Male Threaded Adapter | 10 |
| AM-54 | 1" Copper × 3/4" Male Threaded Adapter | 10 |
| AM-56 | 1" Copper × 1-1/4" Male Threaded Adapter | 10 |
| AM-60 | 1-1/4" Copper × Male Threaded Adapter | 10 |
| AM-64 | 1-1/4" Copper × 3/4" Male Threaded Adapter | 10 |
| AM-65 | 1-1/4" Copper × 1" Male Threaded Adapter | 10 |
| AM-70 | 1-1/2" Copper × Male Threaded Adapter | 10 |
| AM-80 | 2" Copper × Male Threaded Adapter | 5 |

Female Thread Adapters



| | | |
|-------|--|----|
| AF-20 | 3/8" Copper × Female Threaded Adapter | 50 |
| AF-30 | 1/2" Copper × Female Threaded Adapter | 25 |
| AF-32 | 1/2" Copper × 3/8" Female Threaded Adapter | 50 |
| AF-34 | 1/2" Copper × 3/4" Female Threaded Adapter | 25 |
| AF-04 | 5/8" Copper × 3/4" Female Threaded Adapter | 50 |
| AF-40 | 3/4" Copper × Female Threaded Adapter | 25 |
| AF-43 | 3/4" Copper × 1/2" Female Threaded Adapter | 25 |
| AF-45 | 3/4" Copper × 1" Female Threaded Adapter | 10 |
| AF-50 | 1" Copper × Female Threaded Adapter | 10 |
| AF-53 | 1" Copper × 1/2" Female Threaded Adapter | 10 |
| AF-54 | 1" Copper × 3/4" Female Threaded Adapter | 10 |
| AF-56 | 1" Copper × 1-1/4" Female Threaded Adapter | 10 |
| AF-60 | 1-1/4" Copper × Female Threaded Adapter | 10 |
| AF-64 | 1-1/4" Copper × 3/4" Female Threaded Adapter | 10 |
| AF-65 | 1-1/4" Copper × 1" Female Threaded Adapter | 10 |
| AF-70 | 1-1/2" Copper × Female Threaded Adapter | 10 |
| AF-80 | 2" Copper × Female Threaded Adapter | 5 |

Male Thread Street Adapters



| | | |
|----------|---|----|
| AM-ST-30 | 1/2" FTG × Male Threaded Street Adapter | 25 |
| AM-ST-40 | 3/4" FTG × Male Threaded Street Adapter | 25 |
| AM-ST-50 | 1" FTG × Male Threaded Street Adapter | 10 |
| AM-ST-60 | 1-1/4" FTG × Male Threaded Street Adapter | 10 |

Female Thread Street Adapters



| | | |
|----------|---|----|
| AF-ST-30 | 1/2" FTG × Female Threaded Street Adapter | 25 |
| AF-ST-40 | 3/4" FTG × Female Threaded Street Adapter | 25 |
| AF-ST-50 | 1" FTG × Female Threaded Street Adapter | 10 |
| AF-ST-60 | 1-1/4" FTG × Female Threaded Street Adapter | 10 |

Poly Alloy PEX Fittings

- ✓ NSF certified (nsf-pw-g) Lead-Free and approved for portable water use in US and Canada
- ✓ Made to ASTM F2159, F877 and CSA B137.5 standards
- ✓ UPC listed
- ✓ Superior performance in chlorinated, RO and low pH water
- ✓ Rated up to 200F, 200 psi
- ✓ For plumbing or heating applications



Plugs



| Part # | Product Description | Bag Qty |
|----------|--------------------------------------|---------|
| PSF-5001 | 1/2" PEX Plug, Poly Alloy, Lead-Free | 100 |
| PSF-5002 | 3/4" PEX Plug, Poly Alloy, Lead-Free | 100 |
| PSF-5003 | 1" PEX Plug, Poly Alloy, Lead-Free | 25 |

Couplings



| | | |
|----------|---|----|
| PSF-4901 | 1/2" × 1/2" PEX Coupling, Poly Alloy, Lead-Free | 50 |
| PSF-4902 | 3/4" × 3/4" PEX Coupling, Poly Alloy, Lead-Free | 50 |
| PSF-4904 | 3/4" × 1/2" PEX Coupling, Poly Alloy, Lead-Free | 50 |
| PSF-4905 | 1" × 1/2" PEX Coupling, Poly Alloy, Lead-Free | 25 |
| PSF-4906 | 1" × 3/4" PEX Coupling, Poly Alloy, Lead-Free | 25 |
| PSF-4903 | 1" × 1" PEX Coupling, Poly Alloy, Lead-Free | 20 |

Elbows



| | | |
|----------|--|----|
| PSF-4501 | 1/2" PEX × 1/2" PEX Elbow, Poly Alloy, Lead-Free | 50 |
| PSF-4502 | 3/4" PEX × 3/4" PEX Elbow, Poly Alloy, Lead-Free | 25 |
| PSF-4504 | 3/4" PEX × 1/2" PEX Elbow, Poly Alloy, Lead-Free | 25 |
| PSF-4503 | 1" PEX × 1" PEX Elbow, Poly Alloy, Lead-Free | 10 |

Male Thread Elbows



| | | |
|----------|--|----|
| PSF-4601 | 1/2" PEX × 1/2" Male Threaded Elbow, Poly Alloy, Lead-Free | 50 |
| PSF-4603 | 3/4" PEX × 1/2" Male Threaded Elbow, Poly Alloy, Lead-Free | 25 |
| PSF-4602 | 3/4" PEX × 3/4" Male Threaded Elbow, Poly Alloy, Lead-Free | 25 |

Tees



| | | |
|----------|---|----|
| PSF-4801 | 1/2" × 1/2" × 1/2" PEX Tee, Poly Alloy, Lead-Free | 50 |
| PSF-4802 | 3/4" × 3/4" × 3/4" PEX Tee, Poly Alloy, Lead-Free | 25 |
| PSF-4804 | 1/2" × 1/2" × 3/4" PEX Tee, Poly Alloy, Lead-Free | 25 |
| PSF-4805 | 3/4" × 1/2" × 1/2" PEX Tee, Poly Alloy, Lead-Free | 25 |
| PSF-4806 | 3/4" × 1/2" × 3/4" PEX Tee, Poly Alloy, Lead-Free | 25 |
| PSF-4807 | 3/4" × 3/4" × 1/2" PEX Tee, Poly Alloy, Lead-Free | 25 |
| PSF-4808 | 3/4" × 3/4" × 1" PEX Tee, Poly Alloy, Lead-Free | 10 |
| PSF-4809 | 1" × 3/4" × 3/4" PEX Tee, Poly Alloy, Lead-Free | 10 |
| PSF-4810 | 1" × 3/4" × 1" PEX Tee, Poly Alloy, Lead-Free | 10 |
| PSF-4811 | 1" × 1" × 1/2" PEX Tee, Poly Alloy, Lead-Free | 10 |
| PSF-4812 | 1" × 1" × 3/4" PEX Tee, Poly Alloy, Lead-Free | 10 |
| PSF-4803 | 1" × 1" × 1" PEX Tee, Poly Alloy, Lead-Free | 25 |

Male Thread Adapters



| | | |
|----------|--|----|
| PSF-5101 | 1/2" PEX × 1/2" Male Threaded Adapter, Poly Alloy, Lead-Free | 50 |
| PSF-5105 | 3/4" PEX × 1/2" Male Threaded Adapter, Poly Alloy, Lead-Free | 50 |
| PSF-5104 | 1/2" PEX × 3/4" Male Threaded Adapter, Poly Alloy, Lead-Free | 25 |
| PSF-5102 | 3/4" PEX × 3/4" Male Threaded Adapter, Poly Alloy, Lead-Free | 25 |
| PSF-5103 | 1" PEX × 1" Male Threaded Adapter, Poly Alloy, Lead-Free | 25 |

Female Thread Swivel Adapters



| | | |
|----------|---|----|
| PSF-5201 | 1/2" PEX × 1/2" Female Threaded Swivel Adapter, Poly Alloy, Lead-Free | 25 |
| PSF-5202 | 3/4" PEX × 3/4" Female Threaded Swivel Adapter, Poly Alloy, Lead-Free | 25 |

Closed Manifolds



| | | |
|----------|---|----|
| PSF-6002 | 2-Branch PolyAlloy PEX Manifold, 3/4" × 1/2" PEX, Closed, Lead-Free | 10 |
| PSF-6003 | 3-Branch PolyAlloy PEX Manifold, 3/4" × 1/2" PEX, Closed, Lead-Free | 10 |
| PSF-6004 | 4-Branch PolyAlloy PEX Manifold, 3/4" × 1/2" PEX, Closed, Lead-Free | 10 |

Open Manifolds



| | | |
|----------|---|----|
| PSF-6102 | 2-Branch PolyAlloy PEX Manifold, 3/4" × 1/2" PEX, Open, Lead-Free | 10 |
| PSF-6103 | 3-Branch PolyAlloy PEX Manifold, 3/4" × 1/2" PEX, Open, Lead-Free | 10 |
| PSF-6104 | 4-Branch PolyAlloy PEX Manifold, 3/4" × 1/2" PEX, Open, Lead-Free | 10 |
| PSF-6106 | 6-Branch PolyAlloy PEX Manifold, 3/4" × 1/2" PEX, Open, Lead-Free | 10 |

Push To Connect Fittings

- ✓ Lead Free, approved for potable water use
- ✓ PEX inserts included
- ✓ Meets/exceeds ASSE 1061
- ✓ Certified to UPC (U.S.A.) and NPC (Canada)
- ✓ Compatible with CTS piping such as PEX, copper and CPVC



Plugs



| Part # | Product Description | Bag Qty |
|----------|--|---------|
| PF-P2-LF | 3/8" Push To Connect Plug/Cap, Lead-Free | 10 |
| PF-P3-LF | 1/2" Push To Connect Plug/Cap, Lead-Free | 10 |
| PF-P4-LF | 3/4" Push To Connect Plug/Cap, Lead-Free | 10 |
| PF-P5-LF | 1" Push To Connect Plug/Cap, Lead-Free | 10 |

Couplings



| | | |
|-----------|--|----|
| PF-C1-LF | 1/4" × 1/4" Push To Connect Coupling, Lead-Free | 10 |
| PF-C2-LF | 3/8" × 3/8" Push To Connect Coupling, Lead-Free | 10 |
| PF-C32-LF | 1/2" × 3/8" Push To Connect Reducing Coupling, Lead-Free | 10 |
| PF-C3-LF | 1/2" × 1/2" Push To Connect Coupling, Lead-Free | 10 |
| PF-C43-LF | 3/4" × 1/2" Push To Connect Reducing Coupling, Lead-Free | 10 |
| PF-C4-LF | 3/4" × 3/4" Push To Connect Coupling, Lead-Free | 10 |
| PF-C53-LF | 1" × 1/2" Push To Connect Reducing Coupling, Lead-Free | 10 |
| PF-C54-LF | 1" × 3/4" Push To Connect Reducing Coupling, Lead-Free | 10 |
| PF-C5-LF | 1" × 1" Push To Connect Coupling, Lead-Free | 10 |

Slip Couplings



| | | |
|------------|--|----|
| PF-CSL3-LF | 1/2" × 1/2" Push To Connect Slip Coupling, Lead-Free | 10 |
| PF-CSL4-LF | 3/4" × 3/4" Push To Connect Slip Coupling, Lead-Free | 10 |

Elbows



| | | |
|-----------|---|----|
| PF-E2-LF | 3/8" × 3/8" Push To Connect Elbow, Lead-Free | 10 |
| PF-E32-LF | 1/2" × 3/8" Push To Connect Reducing Elbow, Lead-Free | 10 |
| PF-E3-LF | 1/2" × 1/2" Push To Connect Elbow, Lead-Free | 10 |
| PF-E43-LF | 3/4" × 1/2" Push To Connect Reducing Elbow, Lead-Free | 10 |
| PF-E4-LF | 3/4" × 3/4" Push To Connect Elbow, Lead-Free | 10 |
| PF-E54-LF | 1" × 3/4" Push To Connect Reducing Elbow, Lead-Free | 10 |
| PF-E5-LF | 1" × 1" Push To Connect Elbow, Lead-Free | 10 |

MNPT Elbows



| | | |
|-----------|---|----|
| PF-ME2-LF | 3/8" Push To Connect × 3/8" MNPT Elbow, Lead-Free | 10 |
| PF-ME3-LF | 1/2" Push To Connect × 1/2" MNPT Elbow, Lead-Free | 10 |
| PF-ME4-LF | 3/4" Push To Connect × 3/4" MNPT Elbow, Lead-Free | 10 |
| PF-ME5-LF | 1" Push To Connect × 1" MNPT Elbow, Lead-Free | 10 |

FNPT Elbows



| | | |
|-----------|---|----|
| PF-FE2-LF | 3/8" Push To Connect × 3/8" FNPT Elbow, Lead-Free | 10 |
| PF-FE3-LF | 1/2" Push To Connect × 1/2" FNPT Elbow, Lead-Free | 10 |
| PF-FE4-LF | 3/4" Push To Connect × 3/4" FNPT Elbow, Lead-Free | 10 |
| PF-FE5-LF | 1" Push To Connect × 1" FNPT Elbow, Lead-Free | 10 |

FNPT Swivel Elbows



| | | |
|------------|--|----|
| PF-FSE3-LF | 1/2" Push To Connect × 1/2" FNPT Swivel Elbow, Lead-Free | 10 |
| PF-FSE4-LF | 3/4" Push To Connect × 3/4" FNPT Swivel Elbow, Lead-Free | 10 |

FNPT Drop Ear Elbows



| | | |
|------------|--|----|
| PF-DE2-LF | 3/8" Push To Connect × 3/8" FNPT Drop Ear Elbow, Lead-Free | 10 |
| PF-DE23-LF | 3/8" Push To Connect × 1/2" FNPT Drop Ear Elbow, Lead-Free | 10 |
| PF-DE3-LF | 1/2" Push To Connect × 1/2" FNPT Drop Ear Elbow, Lead-Free | 10 |
| PF-DE4-LF | 3/4" Push To Connect × 3/4" FNPT Drop Ear Elbow, Lead-Free | 10 |

Push To Connect Fittings

- ✓ Lead Free, approved for potable water use
- ✓ PEX inserts included
- ✓ Meets/exceeds ASSE 1061
- ✓ Certified to UPC (U.S.A.) and NPC (Canada)
- ✓ Compatible with CTS piping such as PEX, copper and CPVC



Tees



| Part # | Product Description | Bag Qty |
|------------|--|---------|
| PF-T2-LF | 3/8" × 3/8" × 3/8" Push To Connect Tee, Lead-Free | 10 |
| PF-T223-LF | 3/8" × 3/8" × 1/2" Push To Connect Reducing Tee, Lead-Free | 10 |
| PF-T3-LF | 1/2" × 1/2" × 1/2" Push To Connect Tee, Lead-Free | 10 |
| PF-T334-LF | 1/2" × 1/2" × 3/4" Push To Connect Reducing Tee, Lead-Free | 10 |
| PF-T433-LF | 3/4" × 1/2" × 1/2" Push To Connect Reducing Tee, Lead-Free | 10 |
| PF-T434-LF | 3/4" × 1/2" × 3/4" Push To Connect Reducing Tee, Lead-Free | 10 |
| PF-T443-LF | 3/4" × 3/4" × 1/2" Push To Connect Reducing Tee, Lead-Free | 10 |
| PF-T4-LF | 3/4" × 3/4" × 3/4" Push To Connect Tee, Lead-Free | 10 |
| PF-T554-LF | 1" × 1" × 3/4" Push To Connect Reducing Tee, Lead-Free | 10 |
| PF-T5-LF | 1" × 1" × 1" Push To Connect Tee, Lead-Free | 10 |

Slip Tees



| | | |
|------------|--|----|
| PF-TSL3-LF | 1/2" × 1/2" × 1/2" Push To Connect Slip Tee, Lead-Free | 10 |
| PF-TSL4-LF | 3/4" × 3/4" × 3/4" Push To Connect Slip Tee, Lead-Free | 10 |

FNPT Tees



| | | |
|-----------|---|----|
| PF-TF3-LF | 1/2" Push To Connect × 1/2" FNPT Tee, Lead-Free | 10 |
| PF-TF4-LF | 3/4" Push To Connect × 3/4" FNPT Tee, Lead-Free | 10 |
| PF-TF5-LF | 1" Push To Connect × 1" FNPT Tee, Lead-Free | 10 |

MNPT Adapters



| | | |
|------------|---|----|
| PF-MA23-LF | 3/8" Push To Connect × 1/2" MNPT Adapter, Lead-Free | 10 |
| PF-MA3-LF | 1/2" Push To Connect × 1/2" MNPT Adapter, Lead-Free | 10 |
| PF-MA34-LF | 1/2" Push To Connect × 3/4" MNPT Adapter, Lead-Free | 10 |
| PF-MA43-LF | 3/4" Push To Connect × 1/2" MNPT Adapter, Lead-Free | 10 |
| PF-MA4-LF | 3/4" Push To Connect × 3/4" MNPT Adapter, Lead-Free | 10 |
| PF-MA54-LF | 1" Push To Connect × 3/4" MNPT Adapter, Lead-Free | 10 |
| PF-MA5-LF | 1" Push To Connect × 1" MNPT Adapter, Lead-Free | 10 |

FNPT Adapters



| | | |
|------------|---|----|
| PF-FA23-LF | 3/8" Push To Connect × 1/2" FNPT Adapter, Lead-Free | 10 |
| PF-FA3-LF | 1/2" Push To Connect × 1/2" FNPT Adapter, Lead-Free | 10 |
| PF-FA34-LF | 1/2" Push To Connect × 3/4" FNPT Adapter, Lead-Free | 10 |
| PF-FA4-LF | 3/4" Push To Connect × 3/4" FNPT Adapter, Lead-Free | 10 |
| PF-FA54-LF | 1" Push To Connect × 3/4" FNPT Adapter, Lead-Free | 10 |
| PF-FA5-LF | 1" Push To Connect × 1" FNPT Adapter, Lead-Free | 10 |

FNPT Swivel Adapters



| | | |
|------------|--|----|
| PF-FSA3-LF | 1/2" Push To Connect × 1/2" FNPT Swivel Adapter, Lead-Free | 10 |
| PF-FSA4-LF | 3/4" Push To Connect × 3/4" FNPT Swivel Adapter, Lead-Free | 10 |

Ball Valves



| | | |
|-----------|---|----|
| PF-BV2-LF | 3/8" × 3/8" Push To Connect Ball Valve, Lead-Free | 10 |
| PF-BV3-LF | 1/2" × 1/2" Push To Connect Ball Valve, Lead-Free | 10 |
| PF-BV4-LF | 3/4" × 3/4" Push To Connect Ball Valve, Lead-Free | 10 |
| PF-BV5-LF | 1" × 1" Push To Connect Ball Valve, Lead-Free | 10 |

Disconnect Clips



| | | |
|-----------|----------------------|----|
| PF-DCLIP2 | 3/8" Disconnect Clip | 10 |
| PF-DCLIP3 | 1/2" Disconnect Clip | 10 |
| PF-DCLIP4 | 3/4" Disconnect Clip | 10 |
| PF-DCLIP5 | 1" Disconnect Clip | 10 |

PEX Stiffeners



| | | |
|------------|--------------------|----|
| PF-INSERT2 | 3/8" PEX Stiffener | 10 |
| PF-INSERT3 | 1/2" PEX Stiffener | 10 |
| PF-INSERT4 | 3/4" PEX Stiffener | 10 |
| PF-INSERT5 | 1" PEX Stiffener | 10 |

PEX-AL-PEX Compr. Fittings

To install a PEX-AL-PEX compression fitting, a pair of adjustable crescent wrenches or pliers is needed. These fittings are made to ASTM F1281 standard and are compatible with all types and brands of PEX-AL-PEX tubing made to the same standard (Everhot, Watts, Uponor, etc.). These fittings are not lead-free and are approved only for non-potable water applications.



Plugs



| Part # | Product Description | Bag Qty |
|---------|----------------------------------|---------|
| PAP7102 | 1/2" PEX-AL-PEX Compression Plug | 10 |

Couplings



| | | |
|---------|---|----|
| PAP7003 | 1/2" x 1/2" PEX-AL-PEX Compression Coupling | 10 |
|---------|---|----|

Elbows



| | | |
|---------|--|----|
| PAP6802 | 1/2" x 1/2" PEX-AL-PEX Compression Elbow | 10 |
|---------|--|----|

Male Thread Adapters



| | | |
|---------|--|----|
| PAP7402 | 1/2" PEX-AL-PEX Compression x 1/2" Male Threaded Adapter | 10 |
| PAP7406 | 3/4" PEX-AL-PEX Compression x 3/4" Male Threaded Adapter | 10 |
| PAP7407 | 1" PEX-AL-PEX Compression x 1" Male Threaded Adapter | 10 |

Dielectric Unions

Dielectric unions are used to separate two dissimilar metal pipes (such as copper pipes and galvanized steel). Purpose of dielectric unions is to prevent galvanic corrosion, which is caused by electrolysis. Pressure/temperature ratings: 180F @ 250 psi. Materials of construction: Zinc Plated Steel Unions and Threaded Insert, EPDM O-ring, Nylon Insert and Lead-Free Brass Sweat Adapter.



| Part # | Product Description | Bag Qty |
|------------|--|---------|
| DU012CF-LF | 1/2" C x FIP Dielectric Union, Lead-Free | 10 |
| DU034CF-LF | 3/4" C x FIP Dielectric Union, Lead-Free | 10 |
| DU100CF-LF | 1" C x FIP Dielectric Union, Lead-Free | 10 |
| DU114CF-LF | 1-1/4" C x FIP Dielectric Union, Lead-Free | 5 |
| DU112CF-LF | 1-1/2" C x FIP Dielectric Union, Lead-Free | 4 |
| DU200CF-LF | 2" C x FIP Dielectric Union, Lead-Free | 2 |

Brass Ball Valves

These valves feature a heavy-duty, full port design, 1/4-turn steel handle (reversible) and are available in both regular and Lead-Free brass.



- ✓ Threaded valve ends meet ANSI B2.1
- ✓ Sweat valve ends meet ANSI B16.18
- ✓ PEX valve ends meet ASTM F1807/F877

NPT Thread



| Part # | Lead-Free Part # | Product Description | Bag Qty |
|--------|------------------|---|----------|
| BV014T | BV014T-LF | 1/4" NPT Threaded Brass Ball Valve, Full Port | 10 |
| BVT038 | BVT038-LF | 3/8" NPT Threaded Brass Ball Valve, Full Port | 10 |
| BV012T | BV012T-LF | 1/2" NPT Threaded Brass Ball Valve, Full Port | 10 / 100 |
| BV034T | BV034T-LF | 3/4" NPT Threaded Brass Ball Valve, Full Port | 10 / 100 |
| BV100T | BV100T-LF | 1" NPT Threaded Brass Ball Valve, Full Port | 10 / 50 |
| BV114T | BV114T-LF | 1-1/4" NPT Threaded Brass Ball Valve, Full Port | 4 |
| BV112T | BV112T-LF | 1-1/2" NPT Threaded Brass Ball Valve, Full Port | 2 |
| BV200T | BV200T-LF | 2" NPT Threaded Brass Ball Valve, Full Port | 2 |
| | BV212T-LF | 2-1/2" NPT Threaded Brass Ball Valve, Full Port | 2 |
| | BV300T-LF | 3" NPT Threaded Brass Ball Valve, Full Port | 2 |
| | BV400T-LF | 4" NPT Threaded Brass Ball Valve, Full Port | 2 |

NPT Thread With Waste



| | | | |
|----------|--|--|----|
| BV012T-D | | 1/2" NPT Threaded Brass Ball Valve w/ Waste, Full Port | 10 |
| BV034T-D | | 3/4" NPT Threaded Brass Ball Valve w/ Waste, Full Port | 10 |
| BV100T-D | | 1" NPT Threaded Brass Ball Valve w/ Waste, Full Port | 10 |

Sweat



| | | | |
|--------|-----------|---|----------|
| BV012S | BV012S-LF | 1/2" Sweat (Solder) Brass Ball Valve, Full Port | 10 / 100 |
| BV034S | BV034S-LF | 3/4" Sweat (Solder) Brass Ball Valve, Full Port | 10 / 100 |
| BV100S | BV100S-LF | 1" Sweat (Solder) Brass Ball Valve, Full Port | 10 / 50 |
| BV114S | BV114S-LF | 1-1/4" Sweat (Solder) Brass Ball Valve, Full Port | 10 / 100 |
| BV100T | BV100T-LF | 1" NPT Threaded Brass Ball Valve, Full Port | 10 / 50 |
| BV114T | BV114T-LF | 1-1/4" NPT Threaded Brass Ball Valve, Full Port | 4 |
| BV112S | BV112S-LF | 1-1/2" Sweat (Solder) Brass Ball Valve, Full Port | 4 |
| BV200S | BV200S-LF | 2" Sweat (Solder) Brass Ball Valve, Full Port | 5 / 2 |
| | BV212S-LF | 2-1/2" Sweat (Solder) Brass Ball Valve, Full Port | 2 |
| | BV300S-LF | 3" Sweat (Solder) Brass Ball Valve, Full Port | 2 |
| | BV400S-LF | 4" Sweat (Solder) Brass Ball Valve, Full Port | 2 |

Sweat With Waste



| | | | |
|----------|--|--|----|
| BV012S-D | | 1/2" Sweat (Solder) Brass Ball Valve w/ Waste, Full Port | 10 |
| BV034S-D | | 3/4" Sweat (Solder) Brass Ball Valve w/ Waste, Full Port | 10 |
| BV100S-D | | 1" Sweat (Solder) Brass Ball Valve w/ Waste, Full Port | 10 |

PEX



| | | | |
|--------|-----------|--------------------------------------|----|
| VPP012 | VPP012-LF | 1/2" PEX Brass Ball Valve, Full Port | 10 |
| VPP034 | VPP034-LF | 3/4" PEX Brass Ball Valve, Full Port | 10 |
| VPP100 | VPP100-LF | 1" PEX Brass Ball Valve, Full Port | 10 |

PEX With Waste Outlet



| | | | |
|----------|-------------|--|----|
| VPP012-D | VPP012-D-LF | 1/2" PEX Brass Ball Valve w/ Waste Outlet, Full Port | 10 |
| VPP034-D | VPP034-D-LF | 3/4" PEX Brass Ball Valve w/ Waste Outlet, Full Port | 10 |

Brass Ball Valves

These valves feature a heavy-duty, full port design, 1/4-turn steel handle (reversible) and are available in both regular and Lead-Free brass.



- ✓ Threaded valve ends meet ANSI B2.1
- ✓ Sweat valve ends meet ANSI B16.18
- ✓ PEX valve ends meet ASTM F1807/F877

PEX With Drop Ears



| Part # | Lead-Free Part # | Product Description | Bag Qty |
|----------|------------------|--|---------|
| VPP012-D | VPP012-D-LF | 1/2" PEX Brass Ball Valve w/ Drop Ears, Full Port | 10 |
| VPP034-D | VPP034-D-LF | 3/4" PEX Brass Ball Valve w/ Waste Outlet, Full Port | 10 |

PEX × NPT



| | | | |
|---------|------------|---|----|
| BV012TX | BV012TX-LF | 1/2" PEX × NPT Threaded Brass Ball Valve, Full Port | 10 |
| BV034TX | BV034TX-LF | 3/4" PEX × NPT Threaded Brass Ball Valve, Full Port | 10 |
| BV100TX | BV100TX-LF | 1" PEX × NPT Threaded Brass Ball Valve, Full Port | 10 |

PEX × Sweat



| | | | |
|---------|------------|---|----|
| BV012CX | BV012CX-LF | 1/2" PEX × Sweat (Solder) Brass Ball Valve, Full Port | 10 |
| BV034CX | BV034CX-LF | 3/4" PEX × Sweat (Solder) Brass Ball Valve, Full Port | 10 |
| BV100CX | BV100CX-LF | 1" PEX × Sweat (Solder) Brass Ball Valve, Full Port | 10 |

PEX × Sweavel FNPT



| | | |
|---------------|--|----|
| VPP012-SWV-LF | 1/2" PEX × Swivel FNPT Brass Ball Valve, Full Port | 10 |
|---------------|--|----|

Press



| | | |
|-----------|--|----|
| PBV012-LF | 1/2" Press Brass Ball Valve, Full Port | 10 |
| PBV034-LF | 3/4" Press Brass Ball Valve, Full Port | 10 |
| PBV100-LF | 1" Press Brass Ball Valve, Full Port | 10 |
| PBV114-LF | 1-1/4" Press Brass Ball Valve, Full Port | 10 |
| PBV112-LF | 1-1/2" Press Brass Ball Valve, Full Port | 10 |
| PBV200-LF | 2" Press Brass Ball Valve, Full Port | 10 |

Stop Valves

Stop valves or outlet valves is used in plumbing applications to shut off flow of hot or cold water to a plumbing fixture, such as a faucet, icemaker, toilet, dishwasher and similar. They allow to perform routine maintenance such as filter change and drain cleaning, as well as to replace the entire fixture or appliance or make minor repairs such as changing gaskets or water supply connectors. Certified to NSF/ANSI 372 standard.



**PEX × PEX
Straight**



**PEX ×
OD Compr.
Straight**



**OD Compr. ×
OD Compr.
Straight**



**Sweat ×
OD Compr.
Straight**



**PEX ×
OD Compr.
Angle**



**OD Compr. ×
OD Compr.
Angle**



**Sweat ×
OD Compr.
Angle**



| Part # | Product Description | Bag Qty |
|--------------|---|---------|
| PXPSV-QC-LF | 1/2" PEX × 1/2" PEX Straight Stop Valve (1/4-Turn), Lead-Free | 10 |
| PXSVS-QC-LF | 1/2" PEX × 3/8" OD Compr. Straight Stop Valve (1/4-Turn), Lead-Free | 10 |
| VS58CO-QC-LF | 5/8" OD Compr. × 3/8" OD Compr. Straight Stop Valve (1/4-Turn), Lead-Free | 10 |
| VS38CO-QC-LF | 3/8" OD Compr. × 3/8" OD Compr. Straight Stop Valve (1/4-Turn), Lead-Free | 10 |
| VS12SO-QC-LF | 1/2" Sweat × 3/8" OD Compr. Straight Stop Valve (1/4-Turn), Lead-Free | 10 |
| PXSVA-QC-LF | 1/2" PEX × 3/8" OD Compr. Angle Stop Valve (1/4-Turn), Lead-Free | 10 |
| VA58CO-QC-LF | 5/8" OD Compr. × 3/8" OD Compr. Angle Stop Valve (1/4-Turn), Lead-Free | 10 |
| VA12SO-QC-LF | 1/2" Sweat × 3/8" OD Compr. Angle Stop Valve (1/4-Turn), Lead-Free | 10 |

Drain Valves



In-line and outlet drain valves for plumbing and heating applications in regular and lead-free brass options.

- ✓ Neoprene seal washer
- ✓ Heavy cast iron handle
- ✓ Pipe thread comply with ANSI B1.20.1
- ✓ Hose thread comply with ANSI B1.20.7
- ✓ Pressure Ratings: 125 PSI WOG to 100°F
- ✓ Maximum Temperature: 180°F



| Part # | Product Description | Bag Qty |
|--------|---------------------------------------|---------|
| BDR012 | 1/2" NPT Full Flow Boiler Drain Valve | 10 / 50 |
| BDR034 | 3/4" NPT Full Flow Boiler Drain Valve | 10 / 50 |

Gas Ball Valves



Gas cocks are shut-off ball type valves commonly used in installation of residential appliances and heating equipment such as gas stoves, fireplaces, water heaters, boilers, furnaces, etc. They are compatible with natural, manufactured, liquefied petroleum gas (LPG or propane) or air mixtures of such. CSA approved for US and Canada. 1/2" PSIG & 5G. 1/4-turn red handle. 600 WOG rating. ANSI compliant threads. Brass stem and body, PTFE seats.



| Part # | Product Description | Bag Qty |
|--------|---------------------|---------|
| GBV012 | 1/2" Gas Ball Valve | 10 |
| GBV034 | 3/4" Gas Ball Valve | 10 |
| GBV100 | 1" Gas Ball Valve | 10 |

Hose Bibbs



The terms sillcock, hose bib, water spigot and outdoor faucet — all refer to the same type of valve used primarily in outdoor applications, such as irrigation, outdoor sinks and similar.

- ✓ ISO 9001, 14001
- ✓ Maximum Pressure: 125 WOG
- ✓ Approvals: NSF, cUPC, CSA



| Part # | Product Description | Bag Qty |
|-----------|--|---------|
| GHB012-LF | 1/2" MPT Hose Bibb Ball Valve, 1/4-Turn, Lead-Free | 10 |
| GHB034-LF | 3/4" MPT Hose Bibb Ball Valve, 1/4-Turn, Lead-Free | 10 |

Pump Isolation Valves

Pump isolation flange valves offer quick and easy way to isolate a circulator pump for service, replacement or repair without draining and re-filling the entire system. These valves are compatible with most circulators.

- ✓ Uni-body design
- ✓ Heavy-duty forged brass body
- ✓ High quality PTFE seats
- ✓ Adjustable packing nut
- ✓ Blowout-proof stem
- ✓ Pressure Rated: 400 WOG

Threaded Isolators



SWT Isolators



| Part # | Product Description | Bag Qty |
|-----------|---|---------|
| FVT-034-2 | 3/4" Threaded Isolator Flange Valves (pair) | 12 |
| FVT-100-2 | 1" Threaded Isolator Flange Valves (pair) | 9 |
| FVT-114-2 | 1-1/4" Threaded Isolator Flange Valves (pair) | 6 |
| FVC-034-2 | 3/4" SWT Isolator Flange Valves (pair) | 12 |
| FVC-100-2 | 1" SWT Isolator Flange Valves (pair) | 9 |
| FVC-114-2 | 1-1/4" SWT Isolator Flange Valves (pair) | 6 |

Brass Pipe Nipples

Made from dezincification resistant, lead-free red brass and approved for potable water use. Meets or exceeds all applicable ANSI standards.



| Part # | Product Description | Bag Qty |
|------------|---------------------------------|---------|
| RB-018XCL | 1/8" × Close Brass Pipe Nipple | 10 |
| RB-018X112 | 1/8" × 1-1/2" Brass Pipe Nipple | 10 |
| RB-018X2 | 1/8" × 2" Brass Pipe Nipple | 10 |
| RB-018X212 | 1/8" × 2-1/2" Brass Pipe Nipple | 10 |
| RB-018X3 | 1/8" × 3" Brass Pipe Nipple | 10 |
| RB-018X4 | 1/8" × 4" Brass Pipe Nipple | 10 |
| RB-018X5 | 1/8" × 5" Brass Pipe Nipple | 10 |
| RB-014XCL | 1/4" × Close Brass Pipe Nipple | 10 |
| RB-014X112 | 1/4" × 1-1/2" Brass Pipe Nipple | 10 |
| RB-014X2 | 1/4" × 2" Brass Pipe Nipple | 10 |
| RB-014X212 | 1/4" × 2-1/2" Brass Pipe Nipple | 10 |
| RB-014X3 | 1/4" × 3" Brass Pipe Nipple | 10 |
| RB-014X312 | 1/4" × 3-1/2" Brass Pipe Nipple | 10 |
| RB-014X4 | 1/4" × 4" Brass Pipe Nipple | 10 |
| RB-014X5 | 1/4" × 5" Brass Pipe Nipple | 10 |
| RB-014X6 | 1/4" × 6" Brass Pipe Nipple | 10 |
| RB-038XCL | 3/8" × Close Brass Pipe Nipple | 10 |
| RB-038X112 | 3/8" × 1-1/2" Brass Pipe Nipple | 10 |
| RB-038X2 | 3/8" × 2" Brass Pipe Nipple | 10 |
| RB-038X212 | 3/8" × 2-1/2" Brass Pipe Nipple | 10 |
| RB-038X3 | 3/8" × 3" Brass Pipe Nipple | 10 |
| RB-038X312 | 3/8" × 3-1/2" Brass Pipe Nipple | 10 |
| RB-038X4 | 3/8" × 4" Brass Pipe Nipple | 10 |
| RB-038X5 | 3/8" × 5" Brass Pipe Nipple | 10 |
| RB-038X6 | 3/8" × 6" Brass Pipe Nipple | 10 |
| RB-012XCL | 1/2" × Close Brass Pipe Nipple | 10 |
| RB-012X112 | 1/2" × 1-1/2" Brass Pipe Nipple | 10 |
| RB-012X2 | 1/2" × 2" Brass Pipe Nipple | 10 |
| RB-012X212 | 1/2" × 2-1/2" Brass Pipe Nipple | 10 |
| RB-012X3 | 1/2" × 3" Brass Pipe Nipple | 10 |
| RB-012X312 | 1/2" × 3-1/2" Brass Pipe Nipple | 10 |
| RB-012X4 | 1/2" × 4" Brass Pipe Nipple | 10 |
| RB-012X412 | 1/2" × 4-1/2" Brass Pipe Nipple | 10 |
| RB-012X5 | 1/2" × 5" Brass Pipe Nipple | 10 |
| RB-012X512 | 1/2" × 5-1/2" Brass Pipe Nipple | 10 |
| RB-012X6 | 1/2" × 6" Brass Pipe Nipple | 10 |
| RB-034XCL | 3/4" × Close Brass Pipe Nipple | 10 |
| RB-034X112 | 3/4" × 1-1/2" Brass Pipe Nipple | 10 |
| RB-034X2 | 3/4" × 2" Brass Pipe Nipple | 10 |

| Part # | Product Description | Bag Qty |
|------------|-----------------------------------|---------|
| RB-034X212 | 3/4" × 2-1/2" Brass Pipe Nipple | 10 |
| RB-034X3 | 3/4" × 3" Brass Pipe Nipple | 10 |
| RB-034X312 | 3/4" × 3-1/2" Brass Pipe Nipple | 10 |
| RB-034X4 | 3/4" × 4" Brass Pipe Nipple | 10 |
| RB-034X412 | 3/4" × 4-1/2" Brass Pipe Nipple | 10 |
| RB-034X5 | 3/4" × 5" Brass Pipe Nipple | 10 |
| RB-034X512 | 3/4" × 5-1/2" Brass Pipe Nipple | 10 |
| RB-034X6 | 3/4" × 6" Brass Pipe Nipple | 10 |
| RB-100XCL | 1" × Close Brass Pipe Nipple | 10 |
| RB-100X2 | 1" × 2" Brass Pipe Nipple | 10 |
| RB-100X212 | 1" × 2-1/2" Brass Pipe Nipple | 10 |
| RB-100X3 | 1" × 3" Brass Pipe Nipple | 10 |
| RB-100X312 | 1" × 3-1/2" Brass Pipe Nipple | 10 |
| RB-100X4 | 1" × 4" Brass Pipe Nipple | 10 |
| RB-100X412 | 1" × 4-1/2" Brass Pipe Nipple | 10 |
| RB-100X5 | 1" × 5" Brass Pipe Nipple | 10 |
| RB-100X6 | 1" × 6" Brass Pipe Nipple | 10 |
| RB-114XCL | 1-1/4" × Close Brass Pipe Nipple | 5 |
| RB-114X2 | 1-1/4" × 2" Brass Pipe Nipple | 5 |
| RB-114X212 | 1-1/4" × 2-1/2" Brass Pipe Nipple | 5 |
| RB-114X3 | 1-1/4" × 3" Brass Pipe Nipple | 5 |
| RB-114X4 | 1-1/4" × 4" Brass Pipe Nipple | 5 |
| RB-114X5 | 1-1/4" × 5" Brass Pipe Nipple | 5 |
| RB-114X6 | 1-1/4" × 6" Brass Pipe Nipple | 5 |
| RB-112XCL | 1-1/2" × Close Brass Pipe Nipple | 5 |
| RB-112X2 | 1-1/2" × 2" Brass Pipe Nipple | 5 |
| RB-112X3 | 1-1/2" × 3" Brass Pipe Nipple | 5 |
| RB-112X4 | 1-1/2" × 4" Brass Pipe Nipple | 5 |
| RB-112X5 | 1-1/2" × 5" Brass Pipe Nipple | 5 |
| RB-112X6 | 1-1/2" × 6" Brass Pipe Nipple | 5 |
| RB-200XCL | 2" × Close Brass Pipe Nipple | 5 |
| RB-200X2 | 2" × 2-1/2" Brass Pipe Nipple | 5 |
| RB-200X3 | 2" × 3" Brass Pipe Nipple | 5 |
| RB-200X4 | 2" × 4" Brass Pipe Nipple | 5 |
| RB-200X5 | 2" × 5" Brass Pipe Nipple | 5 |
| RB-200X6 | 2" × 6" Brass Pipe Nipple | 5 |

Black Pipe Nipples

Meets or exceeds all applicable ANSI standards.



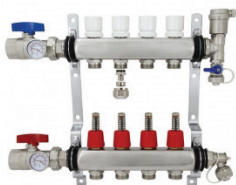
| Part # | Product Description | Bag Qty |
|------------|---------------------------------|---------|
| BL-018XCL | 1/8" × Close Black Pipe Nipple | 10 |
| BL-018X2 | 1/8" × 2" Black Pipe Nipple | 10 |
| BL-018X3 | 1/8" × 3" Black Pipe Nipple | 10 |
| BL-018X4 | 1/8" × 4" Black Pipe Nipple | 10 |
| BL-018X6 | 1/8" × 6" Black Pipe Nipple | 10 |
| BL-014XCL | 1/4" × Close Black Pipe Nipple | 10 |
| BL-014X2 | 1/4" × 2" Black Pipe Nipple | 10 |
| BL-014X3 | 1/4" × 3" Black Pipe Nipple | 10 |
| BL-014X4 | 1/4" × 4" Black Pipe Nipple | 10 |
| BL-014X6 | 1/4" × 6" Black Pipe Nipple | 10 |
| BL-012XCL | 1/2" × Close Black Pipe Nipple | 10 |
| BL-012X112 | 1/2" × 1-1/2" Black Pipe Nipple | 10 |
| BL-012X2 | 1/2" × 2" Black Pipe Nipple | 10 |
| BL-012X212 | 1/2" × 2-1/2" Black Pipe Nipple | 10 |
| BL-012X3 | 1/2" × 3" Black Pipe Nipple | 10 |
| BL-012X312 | 1/2" × 3-1/2" Black Pipe Nipple | 10 |
| BL-012X4 | 1/2" × 4" Black Pipe Nipple | 10 |
| BL-012X412 | 1/2" × 4-1/2" Black Pipe Nipple | 10 |
| BL-012X5 | 1/2" × 5" Black Pipe Nipple | 10 |
| BL-012X512 | 1/2" × 5-1/2" Black Pipe Nipple | 10 |
| BL-012X6 | 1/2" × 6" Black Pipe Nipple | 10 |
| BL-012X7 | 1/2" × 7" Black Pipe Nipple | 10 |
| BL-012X8 | 1/2" × 8" Black Pipe Nipple | 10 |
| BL-012X9 | 1/2" × 9" Black Pipe Nipple | 10 |
| BL-012X10 | 1/2" × 10" Black Pipe Nipple | 10 |
| BL-012X12 | 1/2" × 12" Black Pipe Nipple | 10 |
| BL-034XCL | 3/4" × Close Black Pipe Nipple | 10 |
| BL-034X112 | 3/4" × 1-1/2" Black Pipe Nipple | 10 |
| BL-034X2 | 3/4" × 2" Black Pipe Nipple | 10 |
| BL-034X212 | 3/4" × 2-1/2" Black Pipe Nipple | 10 |
| BL-034X3 | 3/4" × 3" Black Pipe Nipple | 10 |
| BL-034X312 | 3/4" × 3-1/2" Black Pipe Nipple | 10 |
| BL-034X4 | 3/4" × 4" Black Pipe Nipple | 10 |
| BL-034X412 | 3/4" × 4-1/2" Black Pipe Nipple | 10 |
| BL-034X5 | 3/4" × 5" Black Pipe Nipple | 10 |
| BL-034X512 | 3/4" × 5-1/2" Black Pipe Nipple | 10 |
| BL-034X6 | 3/4" × 6" Black Pipe Nipple | 10 |
| BL-034X7 | 3/4" × 7" Black Pipe Nipple | 10 |
| BL-034X8 | 3/4" × 8" Black Pipe Nipple | 10 |

| Part # | Product Description | Bag Qty |
|------------|-----------------------------------|---------|
| BL-034X9 | 3/4" × 9" Black Pipe Nipple | 10 |
| BL-034X10 | 3/4" × 10" Black Pipe Nipple | 10 |
| BL-034X12 | 3/4" × 12" Black Pipe Nipple | 10 |
| BL-100XCL | 1" × Close Black Pipe Nipple | 10 |
| BL-100X2 | 1" × 2" Black Pipe Nipple | 10 |
| BL-100X212 | 1" × 2-1/2" Black Pipe Nipple | 10 |
| BL-100X3 | 1" × 3" Black Pipe Nipple | 10 |
| BL-100X312 | 1" × 3-1/2" Black Pipe Nipple | 10 |
| BL-100X4 | 1" × 4" Black Pipe Nipple | 10 |
| BL-100X412 | 1" × 4-1/2" Black Pipe Nipple | 10 |
| BL-100X5 | 1" × 5" Black Pipe Nipple | 10 |
| BL-100X6 | 1" × 6" Black Pipe Nipple | 10 |
| BL-100X7 | 1" × 7" Black Pipe Nipple | 10 |
| BL-100X8 | 1" × 8" Black Pipe Nipple | 10 |
| BL-100X9 | 1" × 9" Black Pipe Nipple | 10 |
| BL-100X10 | 1" × 10" Black Pipe Nipple | 10 |
| BL-100X12 | 1" × 12" Black Pipe Nipple | 10 |
| BL-114XCL | 1-1/4" × Close Black Pipe Nipple | 10 |
| BL-114X2 | 1-1/4" × 2" Black Pipe Nipple | 5 |
| BL-114X212 | 1-1/4" × 2-1/2" Black Pipe Nipple | 5 |
| BL-114X3 | 1-1/4" × 3" Black Pipe Nipple | 5 |
| BL-114X312 | 1-1/4" × 3-1/2" Black Pipe Nipple | 5 |
| BL-114X4 | 1-1/4" × 4" Black Pipe Nipple | 5 |
| BL-114X412 | 1-1/4" × 4-1/2" Black Pipe Nipple | 5 |
| BL-114X5 | 1-1/4" × 5" Black Pipe Nipple | 5 |
| BL-114X6 | 1-1/4" × 6" Black Pipe Nipple | 5 |
| BL-114X8 | 1-1/4" × 8" Black Pipe Nipple | 5 |
| BL-114X10 | 1-1/4" × 10" Black Pipe Nipple | 5 |
| BL-114X12 | 1-1/4" × 12" Black Pipe Nipple | 5 |

Radiant Heat Manifolds

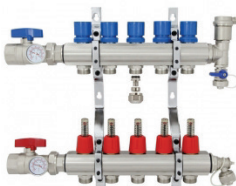
Available in stainless steel or brass body construction. Each radiant heat manifold package (set) has (1) supply manifold with flow meters, (1) return manifold with balancing valves, plus automatic air vent, fill/drain valves on each manifold, shut-off ball valves, supply and return temperature gauges, PEX adapters and mounting brackets. All units are pre-assembled and pressure tested. Manifold's outlets are at 2" OC (On Center). Maximum flow per branch is 1.4 GPM (Gallons Per Minute). Max. operating temperature is 158°F.

Stainless Steel Manifolds



| Part # | Product Description | Bag Qty |
|--------|--|---------|
| SSM102 | 2-branch Stainless Steel Radiant Heat Manifold Set w/ 1/2" PEX adapters | 1 |
| SSM103 | 3-branch Stainless Steel Radiant Heat Manifold Set w/ 1/2" PEX adapters | 1 |
| SSM104 | 4-branch Stainless Steel Radiant Heat Manifold Set w/ 1/2" PEX adapters | 1 |
| SSM105 | 5-branch Stainless Steel Radiant Heat Manifold Set w/ 1/2" PEX adapters | 1 |
| SSM106 | 6-branch Stainless Steel Radiant Heat Manifold Set w/ 1/2" PEX adapters | 1 |
| SSM107 | 7-branch Stainless Steel Radiant Heat Manifold Set w/ 1/2" PEX adapters | 1 |
| SSM108 | 8-branch Stainless Steel Radiant Heat Manifold Set w/ 1/2" PEX adapters | 1 |
| SSM109 | 9-branch Stainless Steel Radiant Heat Manifold Set w/ 1/2" PEX adapters | 1 |
| SSM110 | 10-branch Stainless Steel Radiant Heat Manifold Set w/ 1/2" PEX adapters | 1 |
| SSM111 | 11-branch Stainless Steel Radiant Heat Manifold Set w/ 1/2" PEX adapters | 1 |
| SSM112 | 12-branch Stainless Steel Radiant Heat Manifold Set w/ 1/2" PEX adapters | 1 |

Brass Manifolds



| | | |
|--------|--|---|
| BSM002 | 2-branch Brass Radiant Heat Manifold Set w/ 1/2" PEX adapters | 1 |
| BSM003 | 3-branch Brass Radiant Heat Manifold Set w/ 1/2" PEX adapters | 1 |
| BSM004 | 4-branch Brass Radiant Heat Manifold Set w/ 1/2" PEX adapters | 1 |
| BSM005 | 5-branch Brass Radiant Heat Manifold Set w/ 1/2" PEX adapters | 1 |
| BSM006 | 6-branch Brass Radiant Heat Manifold Set w/ 1/2" PEX adapters | 1 |
| BSM007 | 7-branch Brass Radiant Heat Manifold Set w/ 1/2" PEX adapters | 1 |
| BSM008 | 8-branch Brass Radiant Heat Manifold Set w/ 1/2" PEX adapters | 1 |
| BSM009 | 9-branch Brass Radiant Heat Manifold Set w/ 1/2" PEX adapters | 1 |
| BSM010 | 10-branch Brass Radiant Heat Manifold Set w/ 1/2" PEX adapters | 1 |
| BSM011 | 11-branch Brass Radiant Heat Manifold Set w/ 1/2" PEX adapters | 1 |
| BSM012 | 12-branch Brass Radiant Heat Manifold Set w/ 1/2" PEX adapters | 1 |

PEX Compression Adapters



| | | |
|--------|--|---|
| SSM538 | 3/8" PEX Compression Manifold Adapter | 1 |
| SSM512 | 1/2" PEX Compression Manifold Adapter | 1 |
| SSM212 | 1/2" PEX-AL-PEX Compression Manifold Adapter | 1 |
| SSM558 | 5/8" PEX Compression Manifold Adapter | 1 |

Ball Valves



| | | |
|--------|--|---|
| SSM400 | Manifold Ball Valve w/ Temperature Gauge (red handle) | 1 |
| SSM401 | Manifold Ball Valve w/ Temperature Gauge (blue handle) | 1 |

Angle Ball Valves



| | | |
|--------|--|---|
| SSM410 | Manifold Angle Ball Valve w/ Temperature Gauge (red handle) | 1 |
| SSM411 | Manifold Angle Ball Valve w/ Temperature Gauge (blue handle) | 1 |

Replacement Flow Meters



| | | |
|--------|--|---|
| SSM601 | Replacement Flow Meter for Stainless Steel Manifolds (SSM) | 1 |
| SSM602 | Replacement Flow Meter for Brass Manifolds (BSM) | 1 |

Thermostatic Actuators



| | | |
|--------|--|----|
| SSM101 | 24V Thermostatic Actuator (Zone Valve) for SSM & BSM Manifolds, 2-wire | 10 |
| SSM201 | 24V Thermostatic Actuator (Zone Valve) for SSM & BSM Manifolds, 4-wire | 10 |

Radiant Heat Manifolds

Available in stainless steel or brass body construction. Each radiant heat manifold package (set) has (1) supply manifold with flow meters, (1) return manifold with balancing valves, plus automatic air vent, fill/drain valves on each manifold, shut-off ball valves, supply and return temperature gauges, PEX adapters and mounting brackets. All units are pre-assembled and pressure tested. Manifold's outlets are at 2" OC (On Center). Maximum flow per branch is 1.4 GPM (Gallons Per Minute). Max. operating temperature is 158°F.

| | | Part # | Product Description | Bag Qty |
|---|--|--------|---|---------|
| End Plugs |  | SSM301 | Manifold End Plug | 1 |
| Couplings |  | SSM302 | Manifold Coupling | 1 |
| Balancing Valves |  | SSM405 | Replacement Manifold Balancing Valve | 1 |
| Air Vents |  | SSM406 | Replacement Manifold Air Vent | 1 |
| Outlet Caps |  | SSM407 | Manifold Outlet (Branch) Cap | 1 |
| Manifold × Male NPT Adapters |  | SSM303 | 1" Manifold (BSP) × 1" Male NPT Adapter | 1 |
| Manifold × Female NPT Adapters |  | SSM304 | 1" Manifold (BSP) × 1" Female NPT Adapter | 1 |
| End Piece Sets With Drain |  | SSM408 | Manifold End Piece Set w/ Drain | 1 |
| End Piece Sets With Drain And Vent |  | SSM402 | Manifold End Piece Set w/ Drain and Vent | 1 |
| Replacement Well Thermometers |  | SSM403 | Manifold Replacement Well Thermometer | 1 |

Boiler Headers

Boiler headers or boiler manifolds are commonly used in a boiler room as a distribution hub in hydronic and radiant floor heating systems. All ends are NPT threaded to ANSI/ASME B1.20.1 specifications. Each manifold is individually boxed and comes with protective end caps.



| Part # | Product Description | Bag Qty |
|------------|--|---------|
| H100X34-2 | (2-Branch) Boiler Header Manifold, 1" Trunk × 3/4" Outlets, Threaded | 4 |
| H100X34-3 | (3-Branch) Boiler Header Manifold, 1" Trunk × 3/4" Outlets, Threaded | 4 |
| H100X34-4 | (4-Branch) Boiler Header Manifold, 1" Trunk × 3/4" Outlets, Threaded | 4 |
| H114X34-2 | (2-Branch) Boiler Header Manifold, 1-1/4" Trunk × 3/4" Outlets, Threaded | 4 |
| H114X34-3 | (3-Branch) Boiler Header Manifold, 1-1/4" Trunk × 3/4" Outlets, Threaded | 4 |
| H114X34-4 | (4-Branch) Boiler Header Manifold, 1-1/4" Trunk × 3/4" Outlets, Threaded | 4 |
| H114X34-5 | (5-Branch) Boiler Header Manifold, 1-1/4" Trunk × 3/4" Outlets, Threaded | 4 |
| H114X100-2 | (2-Branch) Boiler Header Manifold, 1-1/4" Trunk × 1" Outlets, Threaded | 4 |
| H114X100-3 | (3-Branch) Boiler Header Manifold, 1-1/4" Trunk × 1" Outlets, Threaded | 4 |
| H114X100-4 | (4-Branch) Boiler Header Manifold, 1-1/4" Trunk × 1" Outlets, Threaded | 4 |
| H114X100-5 | (5-Branch) Boiler Header Manifold, 1-1/4" Trunk × 1" Outlets, Threaded | 4 |
| H112X34-3 | (3-Branch) Boiler Header Manifold, 1-1/2" Trunk × 3/4" Outlets, Threaded | 4 |
| H112X34-4 | (4-Branch) Boiler Header Manifold, 1-1/2" Trunk × 3/4" Outlets, Threaded | 4 |
| H112X34-5 | (5-Branch) Boiler Header Manifold, 1-1/2" Trunk × 3/4" Outlets, Threaded | 4 |
| H112X34-6 | (6-Branch) Boiler Header Manifold, 1-1/2" Trunk × 3/4" Outlets, Threaded | 4 |
| H112X100-3 | (3-Branch) Boiler Header Manifold, 1-1/2" Trunk × 1" Outlets, Threaded | 4 |
| H112X100-4 | (4-Branch) Boiler Header Manifold, 1-1/2" Trunk × 1" Outlets, Threaded | 4 |
| H112X100-5 | (5-Branch) Boiler Header Manifold, 1-1/2" Trunk × 1" Outlets, Threaded | 4 |
| H112X100-6 | (6-Branch) Boiler Header Manifold, 1-1/2" Trunk × 1" Outlets, Threaded | 4 |

Brazed Plate Heat Exchangers

These heat exchangers are made using stainless steel plates and 99.9% pure copper for brazing. Pressure rated 437°F at up to 435 psi.

- ✓ 100% Factory tested
- ✓ Warrantied by the manufacturer
- ✓ 316L Stainless Steel Construction
- ✓ 99.9% pure Copper Brazed
- ✓ Feature Male NPT Connections (standard)



| Part # | Product Description | Bag Qty |
|-------------|--|---------|
| BT3x8-10 | 10-Plate, 3" × 8" Brazed Plate Heat Exchanger with 3/4" MNPT Ports | 1 |
| BT3x8-16 | 16-Plate, 3" × 8" Brazed Plate Heat Exchanger with 3/4" MNPT Ports | 1 |
| BT3x8-20 | 20-Plate, 3" × 8" Brazed Plate Heat Exchanger with 3/4" MNPT Ports | 1 |
| BT3x8-26 | 26-Plate, 3" × 8" Brazed Plate Heat Exchanger with 3/4" MNPT Ports | 1 |
| BT3x8-26F | 26-Plate, 3" × 8" Brazed Plate Heat Exchanger with 3/4" FNPT Ports | 1 |
| BT3x8-30 | 30-Plate, 3" × 8" Brazed Plate Heat Exchanger with 3/4" MNPT Ports | 1 |
| BT3x8-30F | 30-Plate, 3" × 8" Brazed Plate Heat Exchanger with 3/4" FNPT Ports | 1 |
| BT3x8-40 | 40-Plate, 3" × 8" Brazed Plate Heat Exchanger with 3/4" MNPT Ports | 1 |
| BT3x8-50 | 50-Plate, 3" × 8" Brazed Plate Heat Exchanger with 3/4" MNPT Ports | 1 |
| BT4x12-10 | 10-Plate, 4-1/4" × 12" Brazed Plate Heat Exchanger with 1" MNPT Ports | 1 |
| BT4x12-20 | 20-Plate, 4-1/4" × 12" Brazed Plate Heat Exchanger with 1" MNPT Ports | 1 |
| BT4x12-30 | 30-Plate, 4-1/4" × 12" Brazed Plate Heat Exchanger with 1" MNPT Ports | 1 |
| BT4x12-40 | 40-Plate, 4-1/4" × 12" Brazed Plate Heat Exchanger with 1" MNPT Ports | 1 |
| BT4x12-50 | 50-Plate, 4-1/4" × 12" Brazed Plate Heat Exchanger with 1" MNPT Ports | 1 |
| BT4x12-60 | 60-Plate, 4-1/4" × 12" Brazed Plate Heat Exchanger with 1" MNPT Ports | 1 |
| BT4x12-70 | 70-Plate, 4-1/4" × 12" Brazed Plate Heat Exchanger with 1" MNPT Ports | 1 |
| BT5x12C-50 | 50-Plate, 5" × 12" Brazed Plate Heat Exchanger with 1-1/4" MNPT Ports | 1 |
| BT5x12C-60 | 60-Plate, 5" × 12" Brazed Plate Heat Exchanger with 1-1/4" MNPT Ports | 1 |
| BT5x12C-70 | 70-Plate, 5" × 12" Brazed Plate Heat Exchanger with 1-1/4" MNPT Ports | 1 |
| BT5x12C-80 | 80-Plate, 5" × 12" Brazed Plate Heat Exchanger with 1-1/4" MNPT Ports | 1 |
| BT5x12C-90 | 90-Plate, 5" × 12" Brazed Plate Heat Exchanger with 1-1/4" MNPT Ports | 1 |
| BT5x12C-100 | 100-Plate, 5" × 12" Brazed Plate Heat Exchanger with 1-1/4" MNPT Ports | 1 |

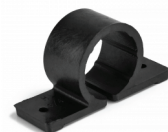
Installation Accessories

Tube Talons



| Part # | Product Description | Bag Qty |
|---------|---|---------|
| PXA4411 | Tube Talons for 1/2" PEX Tubing, Copper, CPVC | 100 |
| PXA4421 | Tube Talons for 3/4" PEX Tubing, Copper, CPVC | 100 |
| PXA4441 | Tube Talons for 1" PEX Tubing, Copper, CPVC | 100 |

Pipe Clamps



| | | |
|---------|--|-----|
| PXA4611 | 1/2" Pipe Clamps for PEX, Copper, CPVC | 100 |
| PXA4621 | 3/4" Pipe Clamps for PEX, Copper, CPVC | 100 |
| PXA4631 | 1" Pipe Clamps for PEX, Copper, CPVC | 100 |

Suspension Pipe Clamps



| | | |
|---------|---|-----|
| PXA4711 | 1/2" Suspension Pipe Clamps for PEX, Copper, CPVC | 100 |
| PXA4721 | 3/4" Suspension Pipe Clamps for PEX, Copper, CPVC | 100 |
| PXA4731 | 1" Suspension Pipe Clamps for PEX, Copper, CPVC | 100 |

Snap-in Clips



| | | |
|---------|-----------------------------------|-----|
| PXA4012 | Snap-in Clips for 3/8" PEX Tubing | 200 |
| PXA4031 | Snap-in Clips for 1/2" PEX Tubing | 130 |
| PXA4041 | Snap-in Clips for 3/4" PEX Tubing | 80 |

PEX Bend Supports



| | | |
|---------|--------------------------------------|---------|
| PXA4212 | 1/2" PEX Plastic Bend Support w/ Ear | 10 |
| PXA4221 | 3/4" PEX Plastic Bend Support w/ Ear | 10 |
| PXA4231 | 1" PEX Plastic Bend Support w/ Ear | 10 / 25 |

Slab Stub-Out Elbows



| | | |
|---------|--|----|
| PXA5011 | 3/8", 1/2" PEX 90° Slab Stub-Out Elbow | 25 |
|---------|--|----|

Wire Mesh Clips



| | | |
|----------|------------------------------|----|
| WPC12-25 | Wire Mesh Clips for 1/2" PEX | 25 |
|----------|------------------------------|----|

PEX Rails



| | | |
|----------|---|-----|
| PXR12-16 | 1/2" PEX Rails, 6.5ft long ea. | 1 |
| PXRALL | PEX "ALL" Rails for PEX tubing sizes 3/8", 1/2", 5/8" & 3/4" (3.3ft long) | 100 |

PEX Tools

Crimp Tools



| Part # | Product Description | Bag Qty |
|---------|----------------------------------|---------|
| PXT3112 | 1/2" PEX Crimp Tool | 1 |
| PXT3134 | 3/4" PEX Crimp Tool | 1 |
| PXT3301 | 1/2" & 3/4" PEX Combo Crimp Tool | 1 |

Crimp Tools (Angle Head)



| | | |
|---------|----------------------------------|---|
| PXT3212 | 1/2" PEX Crimp Tool (Angle Head) | 1 |
| PXT3234 | 3/4" PEX Crimp Tool (Angle Head) | 1 |
| PXT3258 | 5/8" PEX Crimp Tool (Angle Head) | 1 |

Decrimping Tools



| | | |
|---------|---|---|
| PXT3101 | PEX Decrimping Tool (Crimp Ring Removal Tool) | 1 |
|---------|---|---|

Crimp Tool Kits



| | | |
|---------|---|---|
| PXT3202 | PEX Crimp Tool Kit w/ Decrimper for sizes 3/8", 1/2", 5/8" and 3/4" | 1 |
| PXT3203 | PEX Crimp Tool Kit for sizes 1" and 1-1/4" | 1 |
| PXT3204 | PEX Crimp Tool Kit for sizes 1-1/4", 1-1/2" and 2" | 1 |
| PXT3205 | PEX Crimp Tool Kit for sizes 1/2", 5/8", 3/4" & 1" | 1 |

Clamp Tools



| | | |
|---------|---------------------------------|---|
| PXT3010 | PEX Clamp (Cinch) Tool, Economy | 1 |
|---------|---------------------------------|---|



| | | |
|---------|--|---|
| PXT3011 | One-Hand PEX Clamp (Cinch) Tool w/ Holster, Heavy-Duty | 1 |
|---------|--|---|



| | | |
|---------|---|---|
| PXT3014 | PEX Clamp (Cinch) Tool w/ Holster, Heavy-Duty | 1 |
|---------|---|---|

Cutter Tools



| | | |
|---------|-------------------------|---|
| PXT3012 | Economy PEX Cutter Tool | 1 |
|---------|-------------------------|---|



| | | |
|---------|-------------------------|---|
| PXT3016 | Ratchet PEX Cutter Tool | 1 |
|---------|-------------------------|---|

Foamboard Staplers



| | | |
|--------|-------------------------------|---|
| PXTFBS | Everhot Foamboard PEX Stapler | 1 |
|--------|-------------------------------|---|

Foamboard Staples



| | | |
|---------|---|-----|
| PXFBS10 | Everhot Foamboard Staples for 1" Foamboard & Tarp | 300 |
| PXFBS20 | Everhot Foamboard Staples for 1-1/2" & 2" Foamboard | 300 |

Other Stuff

Manifold Pressure Test Kits



| Part # | Product Description | Bag Qty |
|---------|----------------------------|---------|
| TESTKIT | Manifold Pressure Test Kit | 1 |

Reamers



| | | |
|---------|--|---|
| PXT3511 | PEX-AL-PEX Reamer for 1/2", 3/4", 1" PEX-AL-PEX Tubing | 1 |
|---------|--|---|

Radiant Heat Transfer Plates



| | | |
|------------|---|-----|
| HTP122-100 | 2ft long ea, 1/2" PEX Aluminum Heat Transfer Plates, Omega-Shaped | 100 |
| HTP124-50 | 4ft long ea, 1/2" PEX Aluminum Heat Transfer Plates, Omega-Shaped | 50 |

TECHNICAL SPECIFICATIONS SHEET

Barrier PEX Tubing

Sizes: 3/8"(BPx38xx), 1/2"(BPx12xx), 5/8"(BPx58xx), 3/4"(BPx34xx) & 1"(BPx10xx)
 where x is the color (R-red), and xx is the first two numbers of the coil's length. Ex.:
 1000' coil of 1/2" Red Barrier PEX is BPR1210 (12 is 1/2", 58 is 5/8", 34 is 3/4", etc.)

PRESSURE RATINGS

| Operating pressure | Maximum working temp. |
|--------------------|-----------------------|
| 79psi | 200°F |
| 100psi | 180°F |
| 145psi | 73°F |

| Nominal size | OD | Wall thickness | ID | Volume gal/100' | Weight lbs/100' |
|--------------|-------|----------------|-------|-----------------|-----------------|
| 3/8" | 0.500 | 0.070 | 0.350 | 0.50 | 4.50 |
| 1/2" | 0.625 | 0.070 | 0.475 | 0.92 | 5.80 |
| 5/8" | 0.750 | 0.083 | 0.574 | 1.34 | 8.38 |
| 3/4" | 0.875 | 0.097 | 0.677 | 1.83 | 11.00 |
| 1" | 1.125 | 0.125 | 0.863 | 3.03 | 17.06 |

PRESSURE DROP TABLE (psi per 100ft)

MINIMUM BENDING RADIUS

Minimum bending radius R_{min} for Everhot PEX tubing is 8 times the outside diameter (OD):

$$R_{min} = 8 \times OD$$

Example:

minimum bending radius for tubing with CTS size of 1/2" and outside diameter of 5/8" is:

$$R_{min} = 8 \times 5/8" = 5"$$

| Flow rate, GPM | 3/8" | 1/2" | 5/8" | 3/4" | 1" |
|----------------|------|------|------|------|------|
| 0.5 | 2.50 | 0.51 | 0.21 | 0.05 | 0.02 |
| 1.0 | 7.50 | 1.70 | 0.71 | 0.34 | 0.10 |
| 2.0 | 26.1 | 5.30 | 2.12 | 1.02 | 0.35 |
| 3.0 | 54.1 | 11.0 | 4.36 | 2.10 | 0.63 |
| 4.0 | | 18.4 | 7.36 | 3.53 | 1.06 |
| 5.0 | | 27.4 | 11.0 | 5.26 | 1.58 |
| 6.0 | | 38.1 | 15.3 | 7.30 | 2.19 |
| 7.0 | | | 20.1 | 9.63 | 2.89 |
| 8.0 | | | 25.6 | 12.3 | 3.68 |
| 9.0 | | | 31.7 | 15.1 | 4.55 |
| 10.0 | | | | 18.3 | 5.50 |
| 11.0 | | | | 21.7 | 6.52 |
| 12.0 | | | | 25.4 | 7.63 |
| 13.0 | | | | | 8.81 |
| 14.0 | | | | | 10.1 |
| 15.0 | | | | | 11.4 |
| 16.0 | | | | | 12.8 |
| 17.0 | | | | | 14.3 |
| 18.0 | | | | | 15.8 |
| 19.0 | | | | | 17.5 |

APPLICATIONS

- Radiant Heating Systems that do (Commercial, Industrial & Residential) - floors, wall, ceilings.
- Snow / Ice Melting Systems (in concrete & under asphalt).
- Non-potable water distribution
- Hydronic Recirculation Systems
- Geothermal applications

SPECIFICATIONS

PEX Tubing used for the above applications is the non-Barrier PEX, manufactured from HDPE, using a silane method of cross-linking. Such tubing has an EVOH oxygen diffusion barrier per DIN 4726, complies with ANSI/NSF 14 for plumbing system components and is certified for radiant floor heating applications (NSF-rfh).

STANDARDS

ASTM F876: Standard Specification for Crosslinked Polyethylene (PEX) Tubing
 ASTM F877: Standard Specification for Crosslinked Polyethylene (PEX) Plastic Hot- and Cold- Water Distribution Systems
 CSA B137.5: Crosslinked Polyethylene (PEX) Tubing Systems for Pressure Applications

DESCRIPTION

Everhot Inc. currently offers two types of PEX: Barrier and Non-barrier. The difference is the external coating of the barrier PEX, which allows it to be installed in plumbing systems that contain oxidative ferrous parts (such as cast iron). Barrier PEX cannot and shall not be used for drinking water applications.

STORAGE

PEX Tubing from Everhot Inc. shall not be exposed to direct sunlight for more than 60 days. Failure to comply with the above will void the warranty.

WARRANTY

20 year limited warranty. For details, see the complete document.

Dimensional data is subject to manufacturing tolerances. To get the most recent updates, please visit the website.

TECHNICAL SPECIFICATIONS SHEET

Non-Barrier PEX Tubing

Sizes: 3/8"(NPx38xx), 1/2"(NPx12xx), 3/4"(NPx34xx) & 1"(NPx10xx)
 where x is the color (R-red, B-blue), and xx is the first two numbers of the coil's length. Ex.:
 500' coil of 3/4" Blue Non-Barrier PEX is NPB3450 (38 means 3/8", 12 - 1/2", etc.)

PRESSURE RATINGS

| Operating pressure | Maximum working temp. |
|--------------------|-----------------------|
| 79psi | 200°F |
| 100psi | 180°F |
| 145psi | 73°F |

| Nominal size | OD | Wall thickness | ID | Volume gal/100' | Weight lbs/100' |
|--------------|-------|----------------|-------|-----------------|-----------------|
| 3/8" | 0.500 | 0.070 | 0.350 | 0.50 | 4.50 |
| 1/2" | 0.625 | 0.070 | 0.475 | 0.92 | 5.80 |
| 3/4" | 0.875 | 0.097 | 0.677 | 1.83 | 11.00 |
| 1" | 1.125 | 0.125 | 0.863 | 3.03 | 16.94 |

MINIMUM BENDING RADIUS

Minimum bending radius R_{min} for
 Everhot PEX tubing is 8 times the outside
 diameter (OD):

$$R_{min} = 8 \times OD$$

Example:

minimum bending radius for tubing with
 CTS size of 1/2" and outside diameter of
 5/8" is:

$$R_{min} = 8 \times 5/8" = 5"$$

APPLICATIONS

- Hot and Cold water Distribution Systems (Commercial, Industrial & Residential)
- Potable water Distribution Systems
- Hot Chlorinated Water (for Domestic use only per NSF P171)
- Radiant Heating Systems that do not contain ferrous parts.
- Geothermal applications

SPECIFICATIONS

PEX Tubing used for the above applications is the non-Barrier PEX, manufactured from HDPE, using a silane method of cross-linking. Such tubing complies with ANSI/NSF 61 for drinking water system components and ANSI/NSF 14.

STANDARDS

Non-Barrier PEX tubing shall meet or exceed:
 ASTM F876: Standard Specification for Crosslinked Polyethylene (PEX) Tubing
 ASTM F877: Standard Specification for Crosslinked Polyethylene (PEX) Plastic Hot- and Cold- Water Distribution Systems
 ASTM F2023: Oxidative resistance of PEX to Hot Chlorinated Water (per NSF protocol P171)
 CSA B137.5: Crosslinked Polyethylene (PEX) Tubing Systems for Pressure Applications

PRESSURE DROP TABLE (psi per 100ft)

| Flow rate, GPM | 3/8" | 1/2" | 3/4" | 1" |
|----------------|------|------|------|------|
| 0.5 | 2.50 | 0.51 | 0.05 | 0.02 |
| 1.0 | 7.50 | 1.70 | 0.34 | 0.10 |
| 2.0 | 26.1 | 5.30 | 1.02 | 0.35 |
| 3.0 | 54.1 | 11.0 | 2.10 | 0.63 |
| 4.0 | | 18.4 | 3.53 | 1.06 |
| 5.0 | | 27.4 | 5.26 | 1.58 |
| 6.0 | | 38.1 | 7.30 | 2.19 |
| 7.0 | | | 9.63 | 2.89 |
| 8.0 | | | 12.3 | 3.68 |
| 9.0 | | | 15.1 | 4.55 |
| 10.0 | | | 18.3 | 5.50 |
| 11.0 | | | 21.7 | 6.52 |
| 12.0 | | | 25.4 | 7.63 |
| 13.0 | | | | 8.81 |
| 14.0 | | | | 10.1 |
| 15.0 | | | | 11.4 |
| 16.0 | | | | 12.8 |
| 17.0 | | | | 14.3 |
| 18.0 | | | | 15.8 |
| 19.0 | | | | 17.5 |

DESCRIPTION

Everhot Inc. currently offers two types of PEX: Barrier and Non-barrier. Non-barrier tubing is most commonly used for hot and cold water distribution as well as for potable water. It can also be used for Radiant Heating applications in plumbing systems that do not contain oxidative parts.

STORAGE

PEX Tubing from Everhot Inc. shall not be exposed to direct sunlight for more than 60 days. Failure to comply with the above will void the warranty.

WARRANTY

20 year limited warranty. For details, see the complete document.

Dimensional data is subject to manufacturing tolerances. To get the most recent updates, please visit the website.

